

UNITED STATES  
SECURITIES AND EXCHANGE COMMISSION  
Washington, D.C. 20549

FORM 8-K

CURRENT REPORT

Pursuant to Section 13 or 15(d) of the Securities Exchange Act of 1934

Date of Report (Date of earliest event reported): **APRIL 27, 2021**



Commission File Number: 1-11607

**DTE Energy Company**

**Michigan**  
(State or other jurisdiction of incorporation or organization)

**38-3217752**  
(I.R.S Employer Identification No.)

Commission File Number: 1-2198

**DTE Electric Company**

**Michigan**  
(State or other jurisdiction of incorporation or organization)

**38-0478650**  
(I.R.S Employer Identification No.)

**Registrants address of principal executive offices: One Energy Plaza, Detroit, Michigan 48226-1279**  
**Registrants telephone number, including area code: (313) 235-4000**

Check the appropriate box below if the Form 8-K filing is intended to simultaneously satisfy the filing obligation of the registrant under any of the following provisions:

- Written communications pursuant to Rule 425 under the Securities Act (17 CFR 230.425)  
 Soliciting material pursuant to Rule 14a-12 under the Exchange Act (17 CFR 240.14a-12)  
 Pre-commencement communications pursuant to Rule 14d-2(b) under the Exchange Act (17 CFR 240.14d-2(b))  
 Pre-commencement communications pursuant to Rule 13e-4(c) under the Exchange Act (17 CFR 240.13e-4(c))

Securities registered pursuant to Section 12(b) of the Act:

Title of Each Class	Trading Symbol(s)	Name of Exchange on which Registered
Common stock, without par value	DTE	New York Stock Exchange
2016 Series B 5.375% Junior Subordinated Debentures due 2076	DTJ	New York Stock Exchange
2016 Series F 6.00% Junior Subordinated Debentures due 2076	DTY	New York Stock Exchange
2017 Series E 5.25% Junior Subordinated Debentures due 2077	DTW	New York Stock Exchange
2019 6.25% Corporate Units	DTP	New York Stock Exchange
2020 Series G 4.375% Junior Subordinated Debentures due 2080	DTB	New York Stock Exchange

Indicate by check mark whether the registrant is an emerging growth company as defined in Rule 405 under the Securities Act (17 CFR 230.405) or Rule 12b-2 under Exchange Act (17 CFR 240.12b-2).

Emerging growth company

If an emerging growth company, indicate by check mark if the registrant has elected not to use the extended transition period for complying with any new or revised financial accounting standards provided pursuant to Section 13(a) of the Exchange Act.

**Item 2.02. Results of Operations and Financial Condition.**

DTE Energy Company (DTE Energy) is furnishing the Securities and Exchange Commission (SEC) with its earnings release issued April 27, 2021, announcing financial results for the quarter ended March 31, 2021. A copy of the earnings release and the slide presentation, including supplemental financial information, are furnished as Exhibits 99.1 and 99.2 and incorporated herein by reference.

**Item 7.01. Regulation FD Disclosure.**

DTE Energy is furnishing the SEC with its slide presentation issued April 27, 2021. A copy of the slide presentation is furnished as Exhibit 99.2 and incorporated herein by reference.

In its earnings release, slide presentation and this filing, DTE Energy discusses 2021 operating earnings guidance. It is likely that certain items that impact the company's 2021 reported results will be excluded from operating results. Reconciliations to the comparable 2021 reported earnings guidance are not provided because it is not possible to provide a reliable forecast of specific line items (i.e. future non-recurring items, certain mark-to-market adjustments and discontinued operations). These items may fluctuate significantly from period to period and may have a significant impact on reported earnings.

DTE Energy also discusses Adjusted EBITDA in its slide presentation. The reconciliation of net income to Adjusted EBITDA as projected for full-year 2021 is not provided. DTE Energy does not forecast net income as it cannot, without unreasonable efforts, estimate or predict with certainty the components of net income. These components, net of tax, may include, but are not limited to, impairments of assets and other charges, divestiture costs, acquisition costs, or changes in accounting principles. All of these components could significantly impact such financial measures. At this time, DTE Energy is not able to estimate the aggregate impact, if any, of these items on future period reported earnings. Accordingly, DTE Energy is not able to provide a corresponding GAAP equivalent for Adjusted EBITDA.

In accordance with General Instruction B.2 of Form 8-K, the information in this Current Report on Form 8-K, including Exhibits 99.1 and 99.2, shall not be deemed "filed" for the purposes of Section 18 of the Securities Exchange Act of 1934, as amended, or otherwise subject to the liabilities of that section, nor shall they be deemed incorporated by reference in any filing under the Securities Act of 1933, as amended, except as shall be expressly set forth in such a filing.

**Item 9.01. Financial Statements and Exhibits.**

(d) Exhibits

[99.1](#) Earnings Release of DTE Energy Company dated April 27, 2021.

[99.2](#) Slide Presentation of DTE Energy Company dated April 27, 2021.

104 Cover Page Interactive Data File (embedded within the Inline XBRL document).

---

**Forward-Looking Statements:**

This Form 8-K contains forward-looking statements that are subject to various assumptions, risks and uncertainties. It should be read in conjunction with the "Forward-Looking Statements" section in DTE Energy's and DTE Electric Company's (DTE Electric) 2020 Form 10-K and 2021 Form 10-Q (which section is incorporated by reference herein), and in conjunction with other SEC reports filed by DTE Energy and DTE Electric that discuss important factors that could cause DTE Energy's and DTE Electric's actual results to differ materially. DTE Energy and DTE Electric expressly disclaim any current intention to update any forward-looking statements contained in this report as a result of new information or future events or developments.

---

**SIGNATURES**

Pursuant to the requirements of the Securities Exchange Act of 1934, the registrants have duly caused this report to be signed on their behalf by the undersigned hereunto duly authorized.

Date: April 27, 2021

DTE ENERGY COMPANY  
(Registrant)

/s/David Ruud  
David Ruud  
Senior Vice President and Chief Financial Officer

DTE ELECTRIC COMPANY  
(Registrant)

/s/David Ruud  
David Ruud  
Senior Vice President and Chief Financial Officer

NEWS RELEASE



### DTE Energy reports first quarter 2021 results, continues progress in sustaining communities

- *Recognized as a Gallup Great Workplace for ninth consecutive year*
- *Supported Habitat for Humanity effort to weather-proof low-income homes*
- *Supported Detroit small businesses with grant to help navigate beyond the pandemic*
- *Announced voluntary greenhouse gas reduction program for DTE Gas customers*
- *Issued third green bond, funding new renewable investments and energy efficiency programs*
- *Received regulatory approval for Phase 2 of its Electric Vehicle Charging Forward program*

**DETROIT, Apr. 27, 2021** – DTE Energy (NYSE:DTE) today reported first quarter 2021 earnings of \$397 million, or \$2.05 per diluted share, compared with \$340 million, or \$1.76 per diluted share in 2020.

Operating earnings for the first quarter 2021 were \$473 million, or \$2.44 per diluted share, compared with 2020 operating earnings of \$320 million, or \$1.66 per diluted share. Operating earnings exclude non-recurring items, certain mark-to-market adjustments and discontinued operations. Reconciliations of reported earnings to operating earnings are included at the end of this news release.

"We are off to a strong start in 2021," said Jerry Norcia, DTE Energy president and CEO. "Our employees continue to deliver – supporting the needs of the communities we serve while delivering improved reliability and service to our customers."

Norcia noted the following accomplishments:

- **Recognized as a Gallup Great Workplace for ninth consecutive year:** DTE Energy was recognized by Gallup for the ninth year in a row as a workplace with exceptionally high employee engagement – in the top 5% of Gallup's worldwide database of companies.
  - **Awarded grant to Habitat for Humanity:** The DTE Energy Foundation funded critical home repairs for people in western and northern Michigan, providing protection from the state's harsh elements and seasonal weather patterns.
  - **Supported Detroit Means Business:** DTE supported a fundraising effort to help small businesses in Detroit grow past the pandemic. Its Foundation announced a half million dollar grant. DTE is also offering personal protective equipment, technical assistance and opening resources to [elevate the small business support ecosystem](#).
  - **Launched CleanVision Natural Gas Balance program for gas customers:** [CleanVision](#) offers customers a way to affordably offset 25% to 100% of greenhouse gas emissions from an average home's natural gas use and is the first program in the nation to include both carbon offsets and renewable natural gas. This voluntary program for gas customers is similar to DTE's MIGreenPower program for electric customers.
-

- **Issued third green bond:** \$1 billion in bonds will finance green, or clean, energy investments, including renewables and energy efficiency programs. In its initial green bond offering in May 2018, DTE became one of the first investment-grade energy companies in the nation – and the first company in Michigan – to issue green bonds.
- **Developed Charging Forward eFleets:** The five-year, Phase 2 Charging Forward program will accelerate electric fleet adoption in Michigan and help fleet owners reduce barriers of transitioning to eFleets; efficiently integrate charger load with the DTE Electric distribution system; and pilot new clean technologies. DTE will provide electric vehicle education, advisory services and infrastructure for commercial and business fleets. This effort, part of the company's clean energy journey, supports economy-wide solutions to carbon reduction.
- **Announced more than \$100,000 in grants to help Michigan emergency food banks:** The DTE Foundation provided meals to Michiganders as food insecurity continues due to COVID-19. Within the past year, the Foundation has awarded more than \$2 million to address food insecurity.
- **Continued progress toward DT Midstream spin-off:** Announced the executive team who will lead DT Midstream upon closing of the separation transaction, expected mid-year. The team brings a diverse set of backgrounds and energy experience to the business. DT Midstream is among the first in its sector to announce a [2050 net zero carbon emissions goal](#), with plans to achieve 30% of this reduction in the next decade.

#### Outlook for 2021

DTE Energy reaffirms 2021 operating EPS guidance of \$6.88 - \$7.26.

"Our first quarter results give us confidence in meeting our financial goals this year," said David Ruud, DTE senior vice president and CFO. "The spin of our midstream business is progressing as planned and we believe this transaction unlocks significant value for investors of both companies, as DTE becomes primarily a pure-play utility and DT Midstream launches as an independent, C-Corp midstream company."

This earnings announcement and presentation slides are available at [dteenergy.com/investors](https://dteenergy.com/investors).

The company will conduct a conference call to discuss earnings results at 9 a.m. ET. Investors, the news media and the public may listen to a live internet broadcast of the call at [dteenergy.com/investors](https://dteenergy.com/investors). The telephone dial-in numbers in the U.S. and Canada are toll free: (833) 968-2209 or international: (778) 560-2895. The passcode is 4157629. The webcast will be archived on the DTE website at [dteenergy.com/investors](https://dteenergy.com/investors). An audio replay of the call will be available from noon today to noon Thursday, May 27, 2021. To access the replay, dial U.S. and Canada toll free (800) 585-8367 or international toll (416) 621-4642 and enter the passcode 4157629.

#### About DTE Energy

DTE Energy (NYSE: DTE) is a Detroit-based diversified energy company involved in the development and management of energy-related businesses and services nationwide. Its operating units include an electric company serving 2.2 million customers in Southeast Michigan and a natural gas company serving 1.3 million customers in Michigan. The DTE portfolio includes energy businesses focused on power and industrial projects; renewable natural gas; natural gas pipelines, gathering and storage; and energy marketing and trading. As an environmental leader, DTE utility operations will reduce carbon dioxide and methane emissions by more than 80 percent by 2040 to produce [cleaner energy](#) while keeping it safe, reliable and affordable. DTE Electric, DTE Gas and DTE Midstream aspire to achieve [net zero carbon](#)

---

and greenhouse gas emissions by 2050. DTE is committed to [serving with its energy](#) through volunteerism, education and employment initiatives, [philanthropy](#) and economic progress. Information about DTE is available at [dteenergy.com](#), [empoweringmichigan.com](#), [twitter.com/dte\\_energy](#) and [facebook.com](#).

Use of Operating Earnings Information - DTE Energy management believes that operating earnings provide a more meaningful representation of the company's earnings from ongoing operations and uses operating earnings as the primary performance measurement for external communications with analysts and investors. Internally, DTE Energy uses operating earnings to measure performance against budget and to report to the Board of Directors.

In this release, DTE Energy discusses 2021 operating earnings guidance. It is likely that certain items that impact the company's 2021 reported results will be excluded from operating results. Reconciliations to the comparable 2021 reported earnings guidance are not provided because it is not possible to provide a reliable forecast of specific line items (i.e. future non-recurring items, certain mark-to-market adjustments and discontinued operations). These items may fluctuate significantly from period to period and may have a significant impact on reported earnings.

DTE Energy also discusses Adjusted EBITDA in slide presentations. The reconciliation of net income to Adjusted EBITDA as projected for full-year 2021 is not provided. DTE Energy does not forecast net income as it cannot, without unreasonable efforts, estimate or predict with certainty the components of net income. These components, net of tax, may include, but are not limited to, impairments of assets and other charges, divestiture costs, acquisition costs, or changes in accounting principles. All of these components could significantly impact such financial measures. At this time, DTE Energy is not able to estimate the aggregate impact, if any, of these items on future period reported earnings. Accordingly, DTE Energy is not able to provide a corresponding GAAP equivalent for Adjusted EBITDA.

The information contained herein is as of the date of this release. DTE Energy expressly disclaims any current intention to update any forward-looking statements contained in this release as a result of new information or future events or developments. Words such as "anticipate," "believe," "expect," "may," "could," "projected," "aspiration," "plans" and "goals" signify forward-looking statements. Forward-looking statements are not guarantees of future results and conditions but rather are subject to various assumptions, risks and uncertainties. This release contains forward-looking statements about DTE Energy's and DT Midstream's financial results and estimates of future prospects, and actual results may differ materially. This release contains forward-looking statements about DTE Energy's intent to spin-off DT Midstream and DTE Energy's preliminary strategic, operational and financial considerations related thereto. The statements with respect to the separation transaction are preliminary in nature and subject to change as additional information becomes available. The separation transaction will be subject to the satisfaction of a number of conditions, including the final approval of DTE Energy's Board of Directors, and there is no assurance that such separation transaction will in fact occur.

Many factors impact forward-looking statements including, but not limited to, the following: risks related to the spin-off of DT Midstream, including that the process of exploring the transaction and potentially completing the transaction could disrupt or adversely affect the consolidated or separate businesses, results of operations and financial condition, that the transaction may not achieve some or all of any anticipated benefits with respect to either business, and that the transaction may not be completed in accordance with DTE Energy's expected plans or anticipated timelines, or at all; the duration and impact of the COVID-19 pandemic on DTE Energy and customers, impact of regulation by the EPA, the EGLE, the FERC, the MPSC, the NRC, and for DTE Energy, the CFTC and CARB, as well as other applicable governmental proceedings and regulations, including any associated impact on rate structures; the amount and timing of cost recovery allowed as a result of regulatory proceedings, related appeals, or new legislation, including legislative amendments and retail access programs; economic conditions and population changes in our geographic area resulting in changes in demand, customer conservation, and thefts of electricity and, for DTE Energy, natural gas; the operational failure of electric or gas distribution systems or

---

infrastructure; impact of volatility of prices in the oil and gas markets on DTE Energy's gas storage and pipelines operations and the volatility in the short-term natural gas storage markets impacting third-party storage revenues related to DTE Energy; impact of volatility in prices in the international steel markets on DTE Energy's power and industrial projects operations; the risk of a major safety incident; environmental issues, laws, regulations, and the increasing costs of remediation and compliance, including actual and potential new federal and state requirements; the cost of protecting assets against, or damage due to, cyber incidents and terrorism; health, safety, financial, environmental, and regulatory risks associated with ownership and operation of nuclear facilities; volatility in commodity markets, deviations in weather, and related risks impacting the results of DTE Energy's energy trading operations; changes in the cost and availability of coal and other raw materials, purchased power, and natural gas; advances in technology that produce power, store power or reduce power consumption; changes in the financial condition of significant customers and strategic partners; the potential for losses on investments, including nuclear decommissioning and benefit plan assets and the related increases in future expense and contributions; access to capital markets and the results of other financing efforts which can be affected by credit agency ratings; instability in capital markets which could impact availability of short and long-term financing; the timing and extent of changes in interest rates; the level of borrowings; the potential for increased costs or delays in completion of significant capital projects; changes in, and application of, federal, state, and local tax laws and their interpretations, including the Internal Revenue Code, regulations, rulings, court proceedings, and audits; the effects of weather and other natural phenomena on operations and sales to customers, and purchases from suppliers; unplanned outages; employee relations and the impact of collective bargaining agreements; the availability, cost, coverage, and terms of insurance and stability of insurance providers; cost reduction efforts and the maximization of plant and distribution system performance; the effects of competition; changes in and application of accounting standards and financial reporting regulations; changes in federal or state laws and their interpretation with respect to regulation, energy policy, and other business issues; contract disputes, binding arbitration, litigation, and related appeals; and the risks discussed in DTE Energy's public filings with the Securities and Exchange Commission. New factors emerge from time to time. We cannot predict what factors may arise or how such factors may cause results to differ materially from those contained in any forward-looking statement. Any forward-looking statements speak only as of the date on which such statements are made. We undertake no obligation to update any forward-looking statement to reflect events or circumstances after the date on which such statement is made or to reflect the occurrence of unanticipated events. This document should also be read in conjunction with the Forward-Looking Statements section of the joint DTE Energy and DTE Electric 2020 Form 10-K and 2021 Form 10-Q (which sections are incorporated by reference herein), and in conjunction with other SEC reports filed by DTE Energy and DTE Electric.

**For further information, members of the media may call:**

Pete Ternes, DTE Energy, 313.235.5555

**For further information, analysts may call:**

Barbara Tuckfield, DTE Energy, 313.235.1018

John Dermody, DTE Energy, 313.235.8750

---

**DTE Energy Company**  
**Segment Net Income (Unaudited)**

	Three Months Ended March 31,							
	2021				2020			
	Reported Earnings	Pre-tax Adjustments	Income Taxes <sup>(1)</sup>	Operating Earnings	Reported Earnings	Pre-tax Adjustments	Income Taxes <sup>(1)</sup>	Operating Earnings
	(In millions)							
<b>DTE Electric</b>	\$ 208	\$ —	\$ —	\$ 208	\$ 94	\$ —	\$ —	\$ 94
<b>DTE Gas</b>	169	—	—	169	121	—	—	121
<b>Non-utility operations</b>								
Gas Storage and Pipelines	79	10 A	(3)	86	72	—	—	72
Power and Industrial Projects	28	—	—	28	30	—	—	30
Energy Trading	(55)	92 B	(23)	14	34	(26) B	6	14
Total Non-utility operations	52	102	(26)	128	136	(26)	6	116
<b>Corporate and Other</b>	(32)	—	—	(32)	(11)	—	—	(11)
<b>Net Income Attributable to DTE Energy Company</b>	<u>\$ 397</u>	<u>\$ 102</u>	<u>\$ (26)</u>	<u>\$ 473</u>	<u>\$ 340</u>	<u>\$ (26)</u>	<u>\$ 6</u>	<u>\$ 320</u>

(1) For the three months ended March 31, 2021, the amount of income taxes was calculated using a combined federal and state income tax rate of 26% for Gas Storage and Pipelines and 25% for Energy Trading. For the three months ended March 31, 2020, the rate was 25% for Energy Trading.

**Adjustments key**

A) Transaction costs relating to the planned spin-off of the DTE Midstream business — recorded in Operating Expenses — Operation and maintenance

B) Certain adjustments resulting from derivatives being marked-to-market without revaluing the underlying non-derivative contracts and assets — recorded in Operating Expenses — Fuel, purchased power, gas, and other — non-utility

**DTE Energy Company**  
**Segment Diluted Earnings Per Share (Unaudited)<sup>(2)</sup>**

	Three Months Ended March 31,							
	2021				2020			
	Reported Earnings	Pre-tax Adjustments	Income Taxes <sup>(1)</sup>	Operating Earnings	Reported Earnings	Pre-tax Adjustments	Income Taxes <sup>(1)</sup>	Operating Earnings
<b>DTE Electric</b>	\$ 1.07	\$ —	\$ —	\$ 1.07	\$ 0.49	\$ —	\$ —	\$ 0.49
<b>DTE Gas</b>	0.87	—	—	0.87	0.63	—	—	0.63
<b>Non-utility operations</b>								
Gas Storage and Pipelines	0.41	0.05 A	(0.01)	0.45	0.37	—	—	0.37
Power and Industrial Projects	0.15	—	—	0.15	0.16	—	—	0.16
Energy Trading	(0.28)	0.47 B	(0.12)	0.07	0.17	(0.14) B	0.04	0.07
Total Non-utility operations	0.28	0.52	(0.13)	0.67	0.70	(0.14)	0.04	0.60
<b>Corporate and Other</b>	(0.17)	—	—	(0.17)	(0.06)	—	—	(0.06)
<b>Net Income Attributable to DTE Energy Company</b>	<u>\$ 2.05</u>	<u>\$ 0.52</u>	<u>\$ (0.13)</u>	<u>\$ 2.44</u>	<u>\$ 1.76</u>	<u>\$ (0.14)</u>	<u>\$ 0.04</u>	<u>\$ 1.66</u>

(1) For the three months ended March 31, 2021, the amount of income taxes was calculated using a combined federal and state income tax rate of 26% for Gas Storage and Pipelines and 25% for Energy Trading. For the three months ended March 31, 2020, the rate was 25% for Energy Trading.

(2) Per share amounts are divided by Weighted Average Common Shares Outstanding — Diluted, as noted on the Consolidated Statements of Operations (Unaudited).

Adjustments key — see previous page



**DTE 1Q 2021**  
**EARNINGS CONFERENCE CALL**

---

**APRIL 27, 2021**

**DTE**

---

## Safe harbor statement

The information contained herein is as of the date of this document. DTE Energy expressly disclaims any current intention to update any forward-looking statements contained in this document as a result of new information or future events or developments. Words such as “anticipate,” “believe,” “expect,” “may,” “could,” “would,” “projected,” “aspiration,” “plans” and “goals” signify forward-looking statements. Forward-looking statements are not guarantees of future results and conditions but rather are subject to various assumptions, risks and uncertainties. This document contains forward-looking statements about DTE Energy’s and DT Midstream’s financial results and estimates of future prospects, and actual results may differ materially. This document contains forward-looking statements about DTE Energy’s intent to spin-off DT Midstream and DTE Energy’s preliminary strategic, operational and financial considerations related thereto. The statements with respect to the separation transaction are preliminary in nature and subject to change as additional information becomes available. The separation transaction will be subject to the satisfaction of a number of conditions, including the final approval of DTE Energy’s Board of Directors, and there is no assurance that such separation transaction will in fact occur. Many factors impact forward-looking statements including, but not limited to, the following: risks related to the spin-off of DT Midstream, including that the process of exploring the transaction and potentially completing the transaction could disrupt or adversely affect the consolidated or separate businesses, results of operations and financial condition, that the transaction may not achieve some or all of any anticipated benefits with respect to either business, and that the transaction may not be completed in accordance with DTE Energy’s expected plans or anticipated timelines, or at all; the duration and impact of the COVID-19 pandemic on DTE Energy and customers, impact of regulation by the EPA, the EGLE, the FERC, the MPSC, the NRC, and for DTE Energy, the CFTC and CARB, as well as other applicable governmental proceedings and regulations, including any associated impact on rate structures; the amount and timing of cost recovery allowed as a result of regulatory proceedings, related appeals, or new legislation, including legislative amendments and retail access programs; economic conditions and population changes in our geographic area resulting in changes in demand, customer conservation, and thefts of electricity and, for DTE Energy, natural gas; the operational failure of electric or gas distribution systems or infrastructure; impact of volatility of prices in the oil and gas markets on DTE Energy’s gas storage and pipelines operations and the volatility in the short-term natural gas storage markets impacting third-party storage revenues related to DTE Energy; impact of volatility in prices in the international steel markets on DTE Energy’s power and industrial projects operations; the risk of a major safety incident; environmental issues, laws, regulations, and the increasing costs of remediation and compliance, including actual and potential new federal and state requirements; the cost of protecting assets against, or damage due to, cyber incidents and terrorism; health, safety, financial, environmental, and regulatory risks associated with ownership and operation of nuclear facilities; volatility in commodity markets, deviations in weather, and related risks impacting the results of DTE Energy’s energy trading operations; changes in the cost and availability of coal and other raw materials, purchased power, and natural gas; advances in technology that produce power, store power or reduce power consumption; changes in the financial condition of significant customers and strategic partners; the potential for losses on investments, including nuclear decommissioning and benefit plan assets and the related increases in future expense and contributions; access to capital markets and the results of other financing efforts which can be affected by credit agency ratings; instability in capital markets which could impact availability of short and long-term financing; the timing and extent of changes in interest rates; the level of borrowings; the potential for increased costs or delays in completion of significant capital projects; changes in, and application of, federal, state, and local tax laws and their interpretations, including the Internal Revenue Code, regulations, rulings, court proceedings, and audits; the effects of weather and other natural phenomena on operations and sales to customers, and purchases from suppliers; unplanned outages; employee relations and the impact of collective bargaining agreements; the availability, cost, coverage, and terms of insurance and stability of insurance providers; cost reduction efforts and the maximization of plant and distribution system performance; the effects of competition; changes in and application of accounting standards and financial reporting regulations; changes in federal or state laws and their interpretation with respect to regulation, energy policy, and other business issues; contract disputes, binding arbitration, litigation, and related appeals; and the risks discussed in DTE Energy’s public filings with the Securities and Exchange Commission. New factors emerge from time to time. We cannot predict what factors may arise or how such factors may cause results to differ materially from those contained in any forward-looking statement. Any forward-looking statements speak only as of the date on which such statements are made. We undertake no obligation to update any forward-looking statement to reflect events or circumstances after the date on which such statement is made or to reflect the occurrence of unanticipated events. This document should also be read in conjunction with the Forward-Looking Statements section of the joint DTE Energy and DTE Electric 2020 Form 10-K and 2021 Form 10-Q (which sections are incorporated by reference herein), and in conjunction with other SEC reports filed by DTE Energy and DTE Electric.

---

## Participants

Jerry Norcia – President and CEO

David Slater – President and CEO-Elect, DTM

Dave Ruud – Senior Vice President and CFO

Barbara Tuckfield – Director Investor Relations

# Focusing on our employees, customers and communities while delivering for investors



## Employees

- Recognized as a Gallup Great Workplace for the ninth consecutive year
- Demonstrating a safe start to 2021 with industry-leading low OSHA rate
- Building on our diversity, equity and inclusion focus with acceleration of commitment to build a better workplace



## Customers

- Received MPSC order approving strategy which will further postpone the filing of an electric rate case until October, maintaining steady base rates through 2021
- Ranked in top quartile at both utilities for residential satisfaction by J.D. Power



## Community

- Contributed to Habitat for Humanity effort to weather-proof low-income homes
- Supported Detroit small businesses with grant to help navigate beyond the pandemic



## Investors

- Strong 1Q results; on track to deliver 7% operating EPS<sup>1</sup> growth from 2020 original guidance midpoint
- Midstream spin on track for mid-year completion
  - Positions DTE as a predominantly pure-play, best-in-class utility with 5% - 7% long-term operating EPS growth from 2020 original guidance base
  - Establishes DTM as an independent, natural gas midstream company with assets in premium basins connected to major demand markets and accretive organic growth opportunities on existing platforms



## Advancing on environmental initiatives across our businesses

- ✓ Began operations on three new wind parks with a total capacity of 455 MW
- ✓ Filed settlement agreement for incremental voluntary renewable energy sources of 420 MW in 2022 and 380 MW from 2023 - 2025
- ✓ Reached 900 MW of voluntary renewable commitments with large business customers and 30,000 residential customers
- ✓ Received approval for phase two of Charging Forward to strengthen the electrical vehicle infrastructure in Michigan
- ✓ Completed offering of \$1 billion of green bonds at DTE Electric to fund renewable investments and energy efficiency programs
- ✓ Announced CleanVision Natural Gas Balance, the nation's first program to include both carbon offsets and renewable natural gas; executed agreement to secure forestry carbon offsets
- ✓ Committed to net zero emissions goal at the midstream business

**DTE**



## Strong start to 2021; spin progressing on track

### Progressing on financial targets

- ✓ 1Q 2021 operating EPS<sup>1</sup> of \$2.44, up \$0.78 from last year
- ✓ On track to achieve 2021 operating EPS guidance range of \$6.88 to \$7.26<sup>2</sup>
- ✓ Targeting 5% - 7% long-term operating EPS growth from 2020 original guidance base
- ✓ Maintaining a strong balance sheet

### Spin transaction on track for mid-year execution

- ✓ Positions DTE as a predominantly pure-play utility; establishes DTM as an independent, well-financed gas midstream C-Corp with accretive organic growth
- ✓ Form 10 process is progressing
- ✓ Investor roadshow planned for 2Q



1. Reconciliation of operating earnings (non-GAAP) to reported earnings included in the appendix
2. Guidance is with respect to the current consolidated pre-spin version of DTE; the spin is currently expected to occur mid-year 2021 and any post-spin guidance will be provided later in the process



# Midstream business off to strong start in 2021; well-positioned for future success

## Continuing to deliver success in 2021

- ✓ Executing across all platforms
- ✓ On track to achieve \$710 - \$750 million of adjusted EBITDA<sup>1</sup> in 2021

## Establishing best-in-class ESG agenda

- ✓ Announced net zero emissions target by 2050; among first in sector to establish this goal
- ✓ Establishing Board of Directors committed to ensuring that DTM is an ESG leader in the sector

## Executing separation of midstream business

- ✓ Establishes DTM as an independent, natural gas midstream C-Corp
- ✓ Well-positioned with experienced leadership and unique, high-quality assets
- ✓ Building on history of disciplined organic growth, stable cash flows and solid, diversified counterparties



1. Definition of adjusted EBITDA (non-GAAP) included in the appendix. Guidance is with respect to the current consolidated pre-spin version of DTE; the spin is currently expected to occur mid-year 2021 and any post-spin guidance will be provided later in the process

## Spin is on track for mid-year execution

### Achieved progress to date

- ✓ Initiated Form 10 process and review period with SEC
- ✓ Rating agency discussions

### Upcoming milestones on track

- ✓ Form 10 public filing and effectiveness being declared by SEC
- ✓ Debt raise
- ✓ Analyst and investor outreach
- ✓ When-issued shares trading period
- ✓ Spin completion mid-year

**DTE**



# 1Q 2021 operating earnings<sup>1</sup> variance

(millions, except EPS)

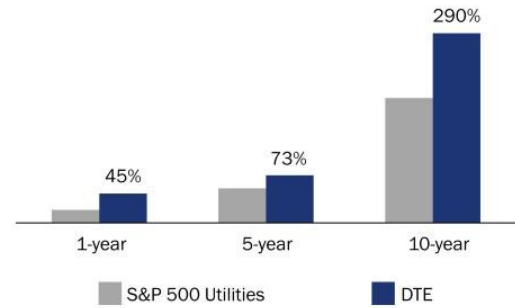
	2020	2021	Variance	Primary drivers
DTE Electric	\$94	\$208	\$114	Rate implementation, non-qualified benefit plan losses in 2020 and colder weather in 2021
DTE Gas	121	169	48	Rate implementation and colder weather in 2021
Gas Storage & Pipelines	72	86	14	LEAP in-service and other pipeline earnings
Power & Industrial Projects	30	28	(2)	Lower steel-related earnings offset by new RNG projects
Energy Trading	14	14	-	Gas portfolio performance offset by power portfolio performance
Corporate & Other	(11)	(32)	(21)	Timing of taxes and net interest
<b>DTE Energy</b>	<b>\$320</b>	<b>\$473</b>	<b>\$153</b>	
<b>Operating EPS</b>	<b>\$1.66</b>	<b>\$2.44</b>	<b>\$0.78</b>	
Avg. Shares Outstanding	192	194		

**DTE** 1. Reconciliation of operating earnings (non-GAAP) to reported earnings included in the appendix

# Positioned for success in 2021 and beyond

- ✓ Continuing strong growth with 2021 operating EPS<sup>1</sup> guidance providing 7% growth over 2020 original guidance
- ✓ On track to achieve 5% - 7% long-term operating EPS growth from 2020 original guidance midpoint
- ✓ Executing spin to position DTE as a predominantly pure-play utility and establish Midstream as an independent, well-financed gas midstream company
- ✓ Utility growth from modernization and cleaner generation investments
- ✓ Providing regulatory certainty with innovative strategies to maintain steady base rates for customers
- ✓ Maintaining strong balance sheet; targeting low end of planned equity issuances in 2021
- ✓ Continuing long track record of delivering premium shareholder returns

Total shareholder return<sup>2</sup>



VISIT US:

[DTE INVESTOR RELATIONS](#)

[2020 ESG REPORT](#)

[CORPORATE CITIZENSHIP  
HIGHLIGHTS](#)

**DTE**





# Appendix

## On track to achieve 2021 operating EPS<sup>1</sup> guidance

(millions, except EPS)

	2021 guidance
DTE Electric	\$826 - \$840
DTE Gas	202 - 212
Gas Storage & Pipelines	296 - 312
Power & Industrial Projects	147 - 163
Energy Trading	15 - 25
Corporate & Other	(148) - (138)
<b>DTE Energy</b>	<b>\$1,338 - \$1,414</b>
<b>Operating EPS</b>	<b>\$6.88 - \$7.26</b>

Guidance is with respect to the current consolidated pre-spin version of DTE; any post-spin guidance will be provided later in the process

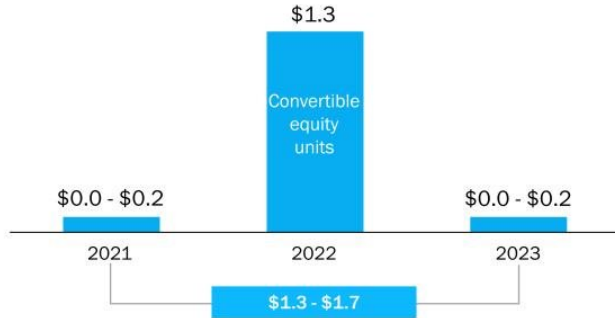


1. Reconciliation of operating earnings (non-GAAP) to reported earnings included in the appendix

# Maintaining strong cash flow, balance sheet and credit profile

(billions)

## Planned equity issuances 2021 - 2023



- Issued \$1 billion in green bonds
- Strong investment-grade credit rating
  - Spin transaction is credit enhancing allowing FFO<sup>1</sup> / Debt<sup>2</sup> target to be lowered from 18% to ~16%
- \$4.1 billion of available liquidity at end of 1Q 2021

Credit ratings	S&P	Moody's	Fitch
DTE Energy (unsecured)	BBB	Baa2	BBB
DTE Electric (secured)	A	Aa3	A+
DTE Gas (secured)	A	A1	A

Strong cash flows have reduced equity needs in plan; targeting low end of planned equity issuances in 2021



1. Funds from Operations (FFO) is calculated using operating earnings  
 2. Debt excludes a portion of DTE Gas' short-term debt and considers 50% of the junior subordinated notes and 100% of the convertible equity units as equity

# Cash flow and capital expenditures guidance<sup>1</sup>

## Cash flow

(billions)	2021 guidance
Cash from operations <sup>2</sup>	\$3.0
Capital expenditures	(4.2)
<b>Free cash flow</b>	<b>(\$1.2)</b>
Dividends	(0.8)
<b>Net cash</b>	<b>(\$2.0)</b>
Debt financing	
Issuances	\$2.1
Redemptions	(0.5)
<b>Change in debt</b>	<b>\$1.6</b>
<b>Change in cash on hand<sup>3</sup></b>	<b>(\$0.4)</b>

## Capital expenditures

(millions)	2021 guidance
<b>DTE Electric</b>	
Base infrastructure	\$1,030
New generation	950
Distribution infrastructure	1,030
	<b>\$3,010</b>
<b>DTE Gas</b>	
Base infrastructure	\$325
Main renewal	295
	<b>\$620</b>
<b>Non-utility</b>	<b>\$500 - \$700</b>
<b>Total</b>	<b>\$4,130 - \$4,330</b>



1. Guidance is with respect to the current consolidated pre-spin version of DTE; the spin is currently expected to occur mid-year 2021 and any post-spin guidance will be provided later in the process
2. Includes equity issued for employee benefit programs
3. Cash on hand from 2020 to be used for 2021 needs

## Cash flow and capital expenditures actuals

Cash flow			Capital expenditures		
(billions)	1Q 2020	1Q 2021	(millions)	1Q 2020	1Q 2021
Cash from operations <sup>1</sup>	\$1.0	\$1.1	<b>DTE Electric</b>		
Capital expenditures	(1.3)	(0.7)	Base infrastructure	\$270	\$190
<b>Free cash flow</b>	<b>(\$0.3)</b>	<b>\$0.4</b>	New generation	415	100
			Distribution infrastructure	184	210
Dividends	(0.2)	(0.2)		<b>\$869</b>	<b>\$500</b>
Other	-	(0.1)	<b>DTE Gas</b>		
<b>Net cash</b>	<b>(\$0.5)</b>	<b>\$0.1</b>	Base infrastructure	\$65	\$65
			Main renewal	59	65
Debt financing				<b>\$124</b>	<b>\$130</b>
Issuances	\$1.4	\$1.0	<b>Non-utility</b>	<b>\$338</b>	<b>\$66</b>
Redemptions	(0.3)	-	<b>Total</b>	<b>\$1,331</b>	<b>\$696</b>
<b>Change in debt</b>	<b>\$1.1</b>	<b>\$1.0</b>			
<b>Change in cash on hand<sup>2</sup></b>	<b>\$0.6</b>	<b>\$1.1</b>			



1. Includes equity issued for employee benefit programs
2. Change in cash on hand in 2020 due to pull-forward of debt issuances for increased liquidity; change in cash on hand in 2021 due to green bond issuance at quarter-end

# Weather impact on sales

## DTE Electric

### Cooling degree days

	1Q 2020	1Q 2021	% Change
Actuals	-	-	0%
Normal	-	-	0%
Deviation from normal	0%	0%	

### Operating earnings<sup>1</sup> impact of weather

	Millions	Per share
	1Q	1Q
2020	(\$18)	(\$0.09)
2021	(\$9)	(\$0.04)

### Weather normal sales

(GWh)	1Q 2020	1Q 2021	% Change
Residential	3,714	3,834	3%
Commercial	4,620	4,507	(2%)
Industrial	2,722	2,525	(7%)
Other	60	59	(2%)
	<b>11,116</b>	<b>10,925</b>	<b>(2%)</b>

## DTE Gas

### Heating degree days

	1Q 2020	1Q 2021	% Change
Actuals	2,890	3,051	6%
Normal	3,288	3,212	(2%)
Deviation from normal	(12%)	(5%)	

### Operating earnings impact of weather

	Millions	Per share
	1Q	1Q
2020	(\$23)	(\$0.12)
2021	(\$11)	(\$0.06)



1. Reconciliation of operating earnings (non-GAAP) to reported earnings included in the appendix

# DTE Electric and DTE Gas regulatory update

## DTE Electric

- General rate case final order (U-20561)
  - Effective: May 15, 2020
  - Rate recovery: \$188 million
  - ROE: 9.9%
  - Capital structure: 50% equity, 50% debt
  - Rate base: \$17.9 billion
- Renewable energy plan (U-18232)
  - Received order: July 2020
  - 350 MW of additional renewable energy by 2022 (225 MW of wind and 125 MW of solar)
- Alternative rate case strategy (U-20835)
  - Received order: April 2021
  - Delays rate case filing to October 2021 or later
- Voluntary renewable plan (U-20713)
  - Filed settlement: April 2021
  - Additional 420 MW in 2022; additional 380 MW from 2023 – 2025
  - Order expected: June 2021
- Innovative, one-time customer refund regulatory liability (U-20921)
  - Received order: December 2020
  - \$30 million voluntary refund
- Securitization filing (U-21015)
  - Filed: March 2021
  - For River Rouge retirement and vegetation management program

## DTE Gas

- General rate case filed February 2021 (U-20940)
  - Effective: January 1, 2022
  - Rate recovery: \$195 million
  - ROE: 10.25%
  - Capital structure: 52% equity, 48% debt
  - Rate base: \$5.6 billion
- Voluntary emissions offset plan (U-20839)
  - Received order: October 2020
  - Comprised of a combination of both carbon offsets and Renewable Natural Gas (RNG)
  - 95% of planned emissions reduction is carbon emissions
  - 5% of planned emissions reduction is RNG

## Michigan Public Service Commission



**Dan Scripps**  
Chair



**Katherine Peretick**  
Commissioner



**Tremaine Phillips**  
Commissioner

# Environmental, social and governance efforts are key priorities; aspiring to be the best in the industry

## Environmental

- Transitioning towards net zero greenhouse gas emissions
  - Delivering clean and reliable energy to customers
  - Protecting our natural resources
- 

## Social

- Focusing on the diversity, safety, well-being and success of our employees
  - Committing to a strong culture provides a solid framework for success
  - Revitalizing neighborhoods and investing in communities
  - World-class volunteerism
- 

## Governance

- Focusing on the oversight of environmental sustainability, social and governance
- Ensuring board diversity
- Providing incentive plans tied to safety and customer satisfaction targets

**DTE**



# Award-winning commitment to being a top ESG employer in the country



Superior corporate citizenship and community involvement



Ambassadors Championing Excellence Award for commitment to supporting minority businesses



Veteran friendly employer



America's Most Responsible Companies 2021



Gallup Great Workplace Award  
9 consecutive years



Inclusion of women-owned businesses in supply chains



Overall excellence in diversity

# Environmental sustainability is critical to the creation of long-term shareholder value

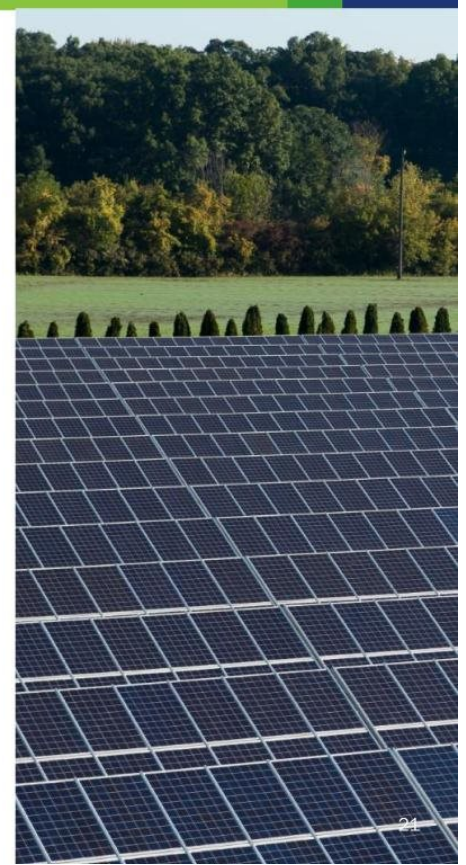
## Driving collaboration in the fight against climate change

- Leading by example with aggressive goal to achieve net zero carbon emissions by 2050
- Active participant in coalitions that advocate for strong environmental public policies
- Key participant in Governor Whitmer's initiative to develop and implement pathways to meet the state of Michigan's economy-wide climate goals
- Leading EEI's strategic plan for effective federal climate policy

## Protecting our natural resources and promoting environmental sustainability through stewardship and conservation

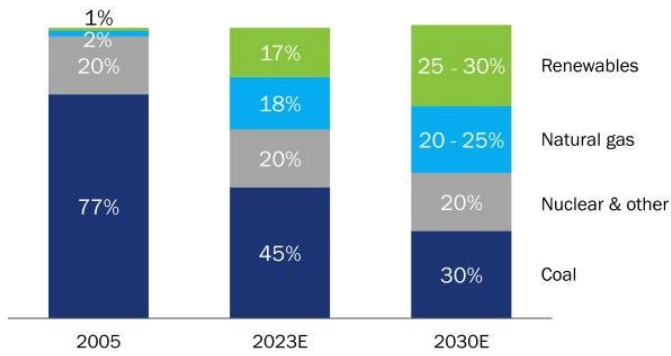
- Targeting a 25% reduction of energy, water and waste at our facilities by 2022 compared to 2016 levels
- Providing habitats for hundreds of species of birds, mammals, fish and insects in our service territory
- Over 35 sites certified under the Wildlife Habitat Council
- Received Corporate Conservation Leadership award from the Wildlife Habitat Council for leadership in wildlife management
- Corporate-wide certification to the ISO14001 Standard for Environmental Management Systems

**DTE**



# More than doubling renewable energy by 2024

Cleaner generation mix



River Rouge



St. Clair



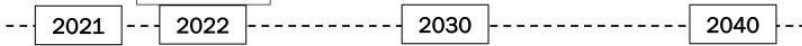
Trenton Channel



Belle River



Monroe



**DTE**



# Committed to diversity, equity and inclusion; creating an environment where all are welcome

## Office of Diversity, Equity and Inclusion

- Led by our CEO and key executive leaders, including a Director of Diversity, Equity and Inclusion
- Focused on sustaining a diverse workforce which is representative of the communities we serve

## Commitment to create a diverse, equitable and inclusive workforce and supplier base influences our hiring strategies and business practices

- Annual review of compensation practices to ensure equitable pay
- Formal training programs including unconscious bias training for employees and leaders
- Hiring people with disabilities and returning citizens
- Over \$700 million invested with diverse suppliers in 2020 as part of our award-winning supplier diversity program
- Public advocacy and financial support
  - Michigan civil rights reform
  - Removing the digital divide
  - Equity funding for schools

**DTE**

9 active employee resource groups that promote a safe and welcoming environment and offer professional development, networking, mentoring and support



Differently-abled group



Asian and Middle Eastern group



Family oriented group



LGBTQ group



Black professionals group



Latinx professionals group



Young professionals group



Veteran empowerment group



Women's group

# Governance framework provides shareholder rights and enables sustainable value creation

## Best-in-class governance practices

- ✓ Lead Independent Director
- ✓ Stock ownership guidelines for non-employee Directors
- ✓ Majority voting standard
- ✓ Annual Director elections
- ✓ Established corporate governance guidelines
- ✓ Publication of Environmental, Social, Governance and Sustainability report
- ✓ Shareholder ability to call a special meeting
- ✓ No supermajority voting provisions to approve mergers or amend charter
- ✓ Overboard policy



# 2021 Energy Trading reconciliation of operating earnings<sup>1</sup> to economic net income

(millions)

## Energy Trading reconciliation

	<u>1Q 2020</u>	<u>1Q 2021</u>
Operating earnings	\$14	\$14
Accounting adjustments <sup>2</sup>	15	(4)
Economic net income	\$29	\$10

- Economic net income equals economic gross margin<sup>3</sup> minus O&M expenses and taxes
- DTE Energy management uses economic net income as one of the performance measures for external communications with analysts and investors
- Internally, DTE Energy uses economic net income as one of the measures to review performance against financial targets and budget



1. Reconciliation of operating earnings (non-GAAP) to reported earnings included in the appendix
2. Consists of 1) the income statement effect of not recognizing changes in the fair market value of certain non-derivative contracts including physical inventory and capacity contracts for transportation, transmission and storage. These contracts are not marked-to-market, instead are recognized for accounting purposes on an accrual basis and 2) operating adjustments for unrealized marked-to-market changes of certain derivative contracts
3. Economic gross margin is the change in net fair value of realized and unrealized purchase and sale contracts including certain non-derivative contract costs

# 2020 - 2021 reconciliation of reported to operating earnings (non-GAAP) and operating EPS (non-GAAP)

Use of Operating Earnings Information – DTE Energy management believes that operating earnings provide a more meaningful representation of the company's earnings from ongoing operations and uses operating earnings as the primary performance measurement for external communications with analysts and investors. Internally, DTE Energy uses operating earnings to measure performance against budget and to report to the Board of Directors.

	Three Months Ended March 31,								Three Months Ended March 31,							
	2021				2020				2021				2020			
	Reported Earnings	Pre-tax Adjustments	Income Taxes <sup>(1)</sup>	Operating Earnings	Reported Earnings	Pre-tax Adjustments	Income Taxes <sup>(1)</sup>	Operating Earnings	Reported Earnings	Pre-tax Adjustments	Income Taxes <sup>(1)</sup>	Operating Earnings	Reported Earnings	Pre-tax Adjustments	Income Taxes <sup>(1)</sup>	Operating Earnings
	(In millions)								(Earnings per share <sup>(2)</sup> )							
DTE Electric	\$ 208	\$ —	\$ —	\$ 208	\$ 94	\$ —	\$ —	\$ 94	\$ 1.07	\$ —	\$ —	\$ 1.07	\$ 0.49	\$ —	\$ —	\$ 0.49
DTE Gas	169	—	—	169	121	—	—	121	0.87	—	—	0.87	0.63	—	—	0.63
<b>Non-utility operations</b>																
Gas Storage and Pipelines	79	10 A	(3)	86	72	—	—	72	0.41	0.05 A	(0.01)	0.45	0.37	—	—	0.37
Power and Industrial Projects	28	—	—	28	30	—	—	30	0.15	—	—	0.15	0.16	—	—	0.16
Energy Trading	(55)	92 B	(23)	14	34	(26) B	6	14	(0.28)	0.47 B	(0.12)	0.07	0.17	(0.14) B	0.04	0.07
Total Non-utility operations	52	102	(26)	128	136	(26)	6	116	0.28	0.52	(0.13)	0.67	0.70	(0.14)	0.04	0.60
Corporate and Other	(32)	—	—	(32)	(11)	—	—	(11)	(0.17)	—	—	(0.17)	(0.06)	—	—	(0.06)
<b>Net Income Attributable to DTE Energy Company</b>	<b>\$ 397</b>	<b>\$ 102</b>	<b>\$ (26)</b>	<b>\$ 473</b>	<b>\$ 340</b>	<b>\$ (26)</b>	<b>\$ 6</b>	<b>\$ 320</b>	<b>\$ 2.05</b>	<b>\$ 0.52</b>	<b>\$ (0.13)</b>	<b>\$ 2.44</b>	<b>\$ 1.76</b>	<b>\$ (0.14)</b>	<b>\$ 0.04</b>	<b>\$ 1.66</b>

#### Adjustments key

- A) Transaction costs relating to the planned spin-off of the DTE Midstream business – recorded in Operating Expenses – Operation and maintenance  
 B) Certain adjustments resulting from derivatives being marked-to-market without revaluing the underlying non-derivative contracts and assets – recorded in Operating Expenses – Fuel, purchased power, gas, and other – non-utility



- For the three months ended March 31, 2021, the amount of income taxes was calculated using a combined federal and state income tax rate of 26% for Gas Storage and Pipelines and 25% for Energy Trading. For the three months ended March 31, 2020, the rate was 25% for Energy Trading.
- Per share amounts are divided by Weighted Average Common Shares Outstanding – Diluted, as noted on the Consolidated Statements of Operations (Unaudited).

---

## Reconciliation of reported to operating earnings (non-GAAP)

Use of Operating Earnings Information – Operating earnings exclude non-recurring items, certain mark-to-market adjustments and discontinued operations. DTE Energy management believes that operating earnings provide a more meaningful representation of the company's earnings from ongoing operations and uses operating earnings as the primary performance measurement for external communications with analysts and investors. Internally, DTE Energy uses operating earnings to measure performance against budget and to report to the Board of Directors.

In this presentation, DTE Energy provides guidance for future period operating earnings. It is likely that certain items that impact the company's future period reported results will be excluded from operating results. A reconciliation to the comparable future period reported earnings is not provided because it is not possible to provide a reliable forecast of specific line items (i.e. future non-recurring items, certain mark-to-market adjustments and discontinued operations). These items may fluctuate significantly from period to period and may have a significant impact on reported earnings.

## Adjusted EBITDA and distributable cash flow (DCF) are non-GAAP measures

Adjusted EBITDA is calculated using net income, the most comparable GAAP measure and adding back expenses for interest, taxes, depreciation and amortization. Adjusted EBITDA also includes an adjustment for DTE's proportional share of joint venture net income, excluding taxes and depreciation. DCF is calculated as Adjusted EBITDA less pre-tax interest expense, maintenance capital investment and cash taxes.

For the midstream business, DTE Energy management believes that Adjusted EBITDA is a meaningful disclosure to investors as it is more commonly used as the primary performance measurement for external communications with analysts and investors in the midstream industry. DCF is used in the calculation of dividend coverage ratios, which DTE Energy management believes is another meaningful performance measurement to disclose to midstream analysts and investors.

Reconciliation of net income to Adjusted EBITDA or DCF as projected for full-year 2021 is not provided. We do not forecast net income as we cannot, without unreasonable efforts, estimate or predict with certainty the components of net income. These components, net of tax, may include, but are not limited to, impairments of assets and other charges, divestiture costs, acquisition costs, or changes in accounting principles. All of these components could significantly impact such financial measures. At this time, management is not able to estimate the aggregate impact, if any, of these items on future period reported earnings. Accordingly, we are not able to provide a corresponding GAAP equivalent for Adjusted EBITDA or DCF.

