

UNITED STATES  
SECURITIES AND EXCHANGE COMMISSION

Washington, D. C. 20549

FORM 8-K

CURRENT REPORT

Pursuant to Section 13 or 15(d) of the Securities Exchange Act of 1934

Date of Report (Date of earliest event reported) May 1, 2017

<b><u>Commission File Number</u></b>	<b><u>Registrant, State of Incorporation, Address and Telephone Number</u></b>	<b><u>I.R.S. Employer Identification No.</u></b>
1-3526	<b>The Southern Company</b> (A Delaware Corporation) 30 Ivan Allen Jr. Boulevard, N.W. Atlanta, Georgia 30308 (404) 506-5000	58-0690070
001-11229	<b>Mississippi Power Company</b> (A Mississippi Corporation) 2992 West Beach Boulevard Gulfport, Mississippi 39501 (228) 864-1211	64-0205820

The names and addresses of the registrants have not changed since the last report.

This combined Form 8-K is filed separately by two registrants: The Southern Company and Mississippi Power Company. Information contained herein relating to each registrant is filed by each registrant solely on its own behalf. Each registrant makes no representation as to information relating to the other registrant.

Check the appropriate box below if the Form 8-K filing is intended to simultaneously satisfy the filing obligation of the registrants under any of the following provisions:

- Written communications pursuant to Rule 425 under the Securities Act (17 CFR 230.425)
  - Soliciting material pursuant to Rule 14a-12 under the Exchange Act (17 CFR 240.14a-12)
  - Pre-commencement communications pursuant to Rule 14d-2(b) under the Exchange Act (17 CFR 240.14d-2(b))
  - Pre-commencement communications pursuant to Rule 13e-4(c) under the Exchange Act (17 CFR 240.13e-4(c))
-

The Southern Company (“Southern Company”) and Mississippi Power Company (“Mississippi Power”) are filing this Current Report on Form 8-K to provide information regarding the schedule and cost estimate for Mississippi Power’s integrated coal gasification combined cycle project in Kemper County, Mississippi (the “Kemper IGCC”).

The information in Items 2.02 and 7.01 in this Current Report on Form 8-K, including the exhibit attached hereto, shall not be deemed “filed” for purposes of Section 18 of the Securities Exchange Act of 1934, as amended, or otherwise subject to the liabilities under that Section. Furthermore, such information, including the exhibit attached hereto, shall not be deemed to be incorporated by reference in any filing under the Securities Act of 1933, as amended, except as shall be expressly set forth by specific reference in such filing.

**Item 2.02. Results of Operations and Financial Condition.**

The information set forth below in Item 8.01 related to the updated cost estimate for completing the Kemper IGCC and the related recognition of charges to income is incorporated by reference into this Item 2.02.

**Item 7.01. Regulation FD Disclosure.**

On May 1, 2017, Mississippi Power submitted its Kemper County Integrated Coal Gasification Combined Cycle Project Monthly Status Report through March 2017 (the “March PSC Report”) to the Mississippi Public Service Commission (the “Mississippi PSC”) pursuant to Docket No. 2009-UA-14. A copy of the March PSC Report is furnished as Exhibit 99.01 to this Current Report on Form 8-K.

**Item 8.01. Other Matters.**

See MANAGEMENT’S DISCUSSION AND ANALYSIS - FINANCIAL CONDITION AND LIQUIDITY - “Capital Requirements and Contractual Obligations” of

Southern Company, MANAGEMENT’S DISCUSSION AND ANALYSIS - FUTURE EARNINGS POTENTIAL - “Integrated Coal Gasification Combined Cycle” and - FINANCIAL CONDITION AND LIQUIDITY - “Capital Requirements and Contractual Obligations” of Mississippi Power, and Note 3 to the financial statements of Southern Company and Mississippi Power under “Integrated Coal Gasification Combined Cycle” in each company’s Annual Report on Form 10-K for the year ended December 31, 2016 (the “Form 10-K”) for additional information regarding the construction of the Kemper IGCC, including: (1) the cost cap set by the Mississippi PSC of \$2.88 billion, net of \$245 million of grants awarded to the project by the U.S. Department of Energy under the Clean Coal Power Initiative Round 2 (the “Initial DOE Grants”) and excluding the cost of the lignite mine and equipment, the cost of the carbon dioxide pipeline facilities, allowance for funds used during construction (“AFUDC”), and certain general exceptions, including change of law, force majeure, and beneficial capital (which exists when Mississippi Power demonstrates that the purpose and effect of the construction cost increase is to produce efficiencies that will result in a neutral or favorable effect on customers relative to the original proposal for the Certificate of Public Convenience and Necessity) (the “Cost Cap Exceptions”) and (2) the expected in-service date and related cost estimate.

Southern Company’s and Mississippi Power’s Current Report on Form 8-K dated April 3, 2017 disclosed an expected in-service date by the end of April 2017 for the remainder of the Kemper IGCC. Mississippi Power achieved integrated operation of both gasifiers on January 29, 2017, including the production of electricity from syngas in both combustion turbines. Mississippi Power continues to work toward achieving sustained operation sufficient to place the remainder of the plant in service. The plant has, however,

produced and captured CO<sub>2</sub> and has produced sulfuric acid and ammonia, all of acceptable quality under the related off-take agreements. As a result of ongoing challenges associated with the ash removal and gas cleanup sour water systems, efforts to improve reliability and reach sustained operation of both gasifiers and production of electricity from syngas in both combustion turbines remain in process. Mississippi Power now expects the remainder of the Kemper IGCC, including both gasifiers, will be placed in service by the end of May 2017. The schedule reflects the expected time needed to repair a leak in one of the particulate control devices for gasifier “A”, make other minor modifications to each gasifier’s ash removal systems, repair the sour water system, and establish sustained operation of both gasifiers for the production of electricity from syngas.

Mississippi Power has revised its previous cost estimate, which included projected costs through April 30, 2017, to include projected additional schedule costs through May 31, 2017 and to include additional costs associated with the current repair outage. Since the filing of the Form 10-K, Mississippi Power has previously reported additional estimated costs subject to the cost cap in the aggregate amount of approximately \$70 million. The March PSC Report contains a further increase in the cost estimate subject to the cost cap for the Kemper IGCC of approximately \$38 million, including approximately \$22 million related to extending the projected schedule through May 2017, \$8 million related to start-up fuel, and \$8 million primarily related to the current repair outage. The total estimated Kemper IGCC cost subject to the \$2.88 billion cost cap as of March 31, 2017 was approximately \$5.75 billion, net of the Initial DOE Grants and excluding the Cost Cap Exceptions. Mississippi Power does not intend to seek rate recovery for any costs related to the construction of the Kemper IGCC that exceed the \$2.88 billion cost cap, net of the Initial

DOE Grants and excluding the Cost Cap Exceptions. As a result of this revised cost estimate, Southern Company and Mississippi Power recorded total pre-tax charges to income for the estimated probable losses on the Kemper IGCC of approximately \$108 million (\$67 million after-tax) during the first quarter 2017.

Further cost increases and/or extensions of the expected in-service date may result from factors including, but not limited to, difficulties integrating the systems required for sustained operations, sustaining nitrogen supply, continued issues with ash removal systems, major equipment failure, unforeseen engineering or design problems including any repairs and/or modifications to systems, and/or operational performance (including additional costs to satisfy any operational parameters ultimately adopted by the Mississippi PSC). Furthermore, additional improvement projects to enhance plant performance, safety, and/or operations ultimately may be completed after the remainder of the Kemper IGCC is placed in service. These projects have yet to be fully evaluated, have not been included in the current cost estimate, and may be subject to the \$2.88 billion cost cap. Any further changes in the estimated costs of the Kemper IGCC subject to the \$2.88 billion cost cap, net of the Initial DOE Grants and excluding the Cost Cap Exceptions, will be reflected in Southern Company's and Mississippi Power's statements of income and these changes could be material.

Any extension of the in-service date beyond May 31, 2017 is currently estimated to result in additional base costs of approximately \$25 million to \$35 million per month, which includes maintaining necessary levels of start-up labor, materials, and fuel, as well as operational resources required to execute start-up activities. However, additional costs may be required for remediation of any further equipment and/or design issues identified. Any

extension of the in-service date would also increase costs for the Cost Cap Exceptions, which are not subject to the \$2.88 billion cost cap established by the Mississippi PSC. These costs include AFUDC, which is currently estimated to total approximately \$16 million per month, as well as carrying costs and operating expenses on Kemper IGCC assets placed in service and consulting and legal fees of approximately \$3 million per month.

The ultimate outcome of this matter cannot be determined at this time.

*Exhibit*

Exhibit 99.01 Kemper County Integrated Coal Gasification Combined Cycle Project Monthly Status Report through March 2017 to the Mississippi Public Service Commission submitted by Mississippi Power Company pursuant to Docket No. 2009-UA-14.

*Cautionary Note Regarding Forward-Looking Statements*

*Certain information contained in this Current Report on Form 8-K and the March PSC Report is forward-looking information based on current expectations and plans that involve risks and uncertainties. Forward-looking information includes, among other things, statements concerning the projected cost and schedule for the completion of construction and start-up of the Kemper IGCC. Southern Company and Mississippi Power caution that there are certain factors that could cause actual results to differ materially from the forward-looking information that has been provided. The reader is cautioned not to put undue reliance on this forward-looking information, which is not a guarantee of future performance and is subject to a number of uncertainties and other factors, many of which are outside the control of Southern Company and Mississippi Power; accordingly, there can be no assurance that such suggested results will be realized. The following factors, in addition to those discussed in the Form 10-K and subsequent securities filings, could cause actual results to differ materially from management expectations as suggested by such forward-looking information: changes in tax and other laws and regulations to which Mississippi Power is subject, including potential tax reform legislation, as well as changes in application of existing laws and regulations; the ability to control costs and avoid cost overruns during the development, construction and operation of facilities, which include the development and construction of generating facilities with designs that have not been finalized or previously constructed, including changes in labor costs and productivity, adverse weather conditions, shortages and inconsistent quality of equipment, materials, and labor, sustaining nitrogen supply, continued issues with ash removal systems, contractor or supplier delay, non-performance under operating or other agreements, operational readiness, including specialized operator training and required site safety programs, unforeseen engineering or*



<b>Project Costs and Summary</b>	<b>1</b>
<b>Key Contracts Over \$10M</b>	<b>2</b>
<b>Project Updates</b>	<b>3</b>
<b>Safety</b>	
<b>Schedule</b>	
<b>Permits and Approvals</b>	
<b>Mississippi Economic Impact</b>	<b>4</b>
<b>Liberty Mine Summary</b>	<b>8</b>

---

Table 1: Capped Plant Costs (in millions of dollars)

Cost Category	Current View	Variance from Previous Month	Actuals through March 2017	Confirmed Cost %
Land	\$32.3	\$0.1	\$32.3	100%
EPC	4,447.4	11.1	4,415.0	99%
Transmission	93.8	0.0	93.8	100%
Fuel Facilities	157.5	0.0	156.5	100%
Pre Commercial Operations & Post-in-Service Cost <sup>(2)</sup>	1,056.2	16.9	957.6	83%
CC & Related Assets Placed in Service - Non-Incremental <sup>(2)</sup>	46.0	0.1	43.4	94%
Project Development	80.8	(0.5)	78.0	97%
Start Up Fuel / Energy	98.0	10.4	74.1	76%
DOE CCPI2 Funding	(245.3)	0.0	(245.3)	
Ad Valorem	24.7	0.1	24.6	100%
Schedule Risk	0.0	0.0	0.0	
Contingency	13.9	(1.3)	0.0	
<b>Total Plant <sup>(3)</sup></b>	<b>5,805.4</b>	<b>37.7</b>	<b>5,630.0</b>	
<b>Deduction for Cap Exceptions (BC/FM/CIL) <sup>(4)</sup></b>	<b>(55.9)</b>	<b>0.0</b>	<b>(55.9)</b>	
<b>Total Plant Subject to Cost Cap</b>	<b>\$5,749.5</b>	<b>\$37.7</b>	<b>\$5,574.2</b>	<b>96%</b>

Table 2: Exemptions and Exceptions (in millions of dollars)

Cost Category	Current View	Variance from Previous Month	Actuals through March 2017
Mine (details on p.8) <sup>(5)</sup>	\$232.0	\$0.0	\$232.0
CO <sub>2</sub> Pipeline	\$111.1	\$0.2	\$109.7
Regulatory and Other Asset Accounts <sup>(1)</sup>	\$224.3	\$3.5	\$217.8
CC & Related Assets Placed in Service - Incremental (Net of Revenues) <sup>(6)</sup>	\$43.8	\$0.8	\$42.6
Project AFUDC - Non Mine <sup>(4)</sup>	\$832.2	\$15.7	\$800.8
Process Development Allowance	\$46.5	\$0.0	\$29.9
Beneficial Capital <sup>(5)</sup>	\$47.6	\$0.0	\$47.6
Force Majeure <sup>(1)</sup>	\$2.7	\$0.0	\$2.7
Change in Law <sup>(3)</sup>	\$5.6	\$0.0	\$5.6
<b>Total Exemptions and Exceptions</b>	<b>\$1,545.9</b>	<b>\$20.3</b>	<b>\$1,488.6</b>

Table 3: Total Project Costs (in millions of dollars)

Cost Category	Current View
Total Plant Subject to Cost Cap <sup>(10)</sup>	\$5,749.5
Total Exemptions and Exceptions	\$1,545.9
<b>Total Project Cost</b>	<b>\$7,295.4</b>
Amount in Excess of the Cost Cap	(\$2,869.5)
Additional DOE CCPI2 Funding <sup>(11)</sup>	(\$136.7)
<b>Total Amount Eligible for Recovery Under 2012 MPSC Order <sup>(12) (13)</sup></b>	<b>\$4,289.2</b>

- (1) Effective August 2016, Mississippi Power Company began expensing certain ongoing project costs that previously were being deferred as regulatory assets. These costs continue to be included in the current view of project costs in this report.
- (2) Non-incremental operating and maintenance costs related to the combined cycle and associated common facilities placed in service in September 2014 that are subject to the \$2.88 billion cost cap.
- (3) The current view cost includes \$12 million for identified costs to be incurred beyond May 31, 2017, expected to be subject to the \$2.86 billion cost cap. Additional improvement projects to enhance plant performance, safety and/or operations ultimately may be completed after the remainder of the Kemper IGCC is placed in service. These projects have yet to be fully evaluated, have not been included in the current view cost, and may be subject to the \$2.86 billion cost cap.
- (4) Actual plant costs through March 2017 and current view cost include costs related to Beneficial Capital, Force Majeure and Change in Law.
- (5) Reclassification of Beneficial Capital, Force Majeure, and Change in Law from Capped Plant Cost (table 1) current view and actual cost to Exemptions and Exceptions (table 2) through March 2017, as provided for in the 2012 MPSC order, subject to approval by the MPSC.
- (6) The Liberty Mine was placed in service in June 2013. Construction costs incurred since that date are reported above as Mine costs. Operational costs incurred since the mine was placed in service are not included in this report. These costs are considered to be post-in-service capital and fuel inventory costs and will be subject to MPUS and MPSC oversight in conjunction with the annual review of fuel costs.
- (7) Effective August 2016, certain debt carrying costs (associated with certain assets placed in service and other non-construction work in progress accounts) that previously were deferred as regulatory assets are now being recognized through income; however, such costs continue to be included in the current view of project costs in this report. The equity return associated with assets placed in service (a portion of which is being recognized through income effective August 2016) and other non-construction work in progress accounts, as well as debt carrying costs recovered through wholesale rates and/or deferred, are not included in this report.
- (8) Incremental operating and maintenance costs related to the combined cycle and associated facilities placed in service in August 2014. This amount includes a credit for variable operating and maintenance expenses related to energy sales, net of station service.
- (9) AFUDC related to the combined cycle and associated common facilities placed in service ceased in August 2014.
- (10) Mississippi Power Company increased the current view cost subject to the cost cap by approximately \$36 million, including approximately \$22 million related to extending the projected schedule through May 2017, \$9 million related to start up fuel, and \$5 million primarily related to current repair work.
- (11) On April 8, 2016, Mississippi Power Company received approximately \$137 million in additional grant funding from the DOE for the Kemper IGCC, which is expected to be used to reduce future rate impacts for customers.
- (12) Total Amount Eligible for Recovery under 2012 MPSC Order is net of Mississippi Power Company's estimated loss as a result of exceeding the cost cap of \$2.88 billion. This amount is based on information available through the filing date, and is subject to review and approval by the MPSC.
- (13) Total Amount Eligible for Recovery Under 2012 MPSC Order includes the 15% undivided interest in the Kemper IGCC that was previously projected to be purchased by South Mississippi Electric Power Association (SMEPA). On May 20, 2015, SMEPA terminated its purchase agreement. Mississippi Power Company is evaluating its alternatives related to the investment and related costs associated with the 15% ownership interest. The outcome of this matter cannot be determined at this time.

**Major Items and Milestones Achieved**

- The purchase of 2,968 acres for the plant site has been completed.
- Construction is complete for the nitrogen plant, water plant, water storage lake, administrative and electrical buildings, lignite storage dome, electrical ductbanks, concrete installation, structural steel, process piping installation, cable tray, tubing, and underground piping. Construction is complete on the three 115kV line rebuild projects, the eight substations, and the Seward - Sykes fiber line. The four new 230kV lines, one new 115kV line, and the mine service line are complete and energized.
- The combined cycle was placed in service on natural gas on August 9, 2014.
- The treated effluent, natural gas, and CO<sub>2</sub> pipeline installations are 100% complete. Closeout activities remain on all three pipelines.
- Long term contracts have been signed for the sale of CO<sub>2</sub>, sulfuric acid, and ammonia. On June 3, 2016, Mississippi Power Company executed its contract with one of the CO<sub>2</sub> off-takers for the purchase of 30% of the CO<sub>2</sub> to be captured at the Kemper IGCC. On that same day, Mississippi Power Company revised its contract with the other CO<sub>2</sub> off-taker to provide for the purchase of 100% of the captured CO<sub>2</sub>. The revised contract provides for termination rights if CO<sub>2</sub> deliveries do not occur by July 1, 2017.
- First fire on natural gas of Gasifier "B" Startup Burner achieved on March 1, 2015, and First Fire on natural gas of Gasifier "A" Startup Burner achieved on March 2, 2015.
- Air Flow Testing - Train "A" was achieved April 6, 2015, and Air Flow Testing - Train "B" was achieved May 22, 2015.
- Fluidization Trial - Train "A" was achieved November 10, 2015, and Fluidization Trial Train "B" was achieved February 25, 2016.
- Refractory Cure - Train "B" was achieved March 4, 2016, and Refractory Cure - Train "A" was achieved September 6, 2016.
- Lignite Dryer Ready for First Lignite Feed was achieved June 29, 2016.
- LDF (Non-Dom) operational readiness was achieved July 23, 2016.
- AGR Commissioning Train "B" was achieved July 5, 2016, and AGR Commissioning Train "A" was achieved August 19, 2016.
- First Syngas on Train "B" was achieved July 14, 2016, and First Syngas on Train "A" was achieved September 13, 2016.
- WSA Commissioning achieved October 9, 2016.
- Reliable/Clean Syngas available Train "A" and First Syngas to Combustion Turbine "A" was achieved October 11, 2016.
- Reliable/Clean Syngas available Train "B" and First Syngas to Combustion Turbine "B" was achieved November 17, 2016.
- Mississippi Power Company achieved integrated operation of both gasifiers on January 28, 2017, including the production of electricity from syngas in both combustion turbines in process. Mississippi Power Company now expects the remainder of the Kemper IGCC, including both gasifiers, will be placed in service by the end of May 2017.

**Mississippi Economic Impact**

- Mississippi workforce contributed 236 construction jobs in March for the Project. A total of 571 Mississippi companies have provided construction, equipment, material or professional services for the Project.

**Overall Project Status**

- Mississippi Power Company placed the combined cycle unit and associated common facilities portion of the Kemper IGCC in service on August 9, 2014.
- On April 3, 2017 Mississippi Power Company disclosed an expected in-service date by the end of April 2017 for the remainder of the Kemper IGCC. As a result of ongoing challenges associated with the ash removal and gas cleanup water systems, efforts to improve reliability and reach sustained operation of both gasifiers and production of electricity from syngas in both combustion turbines remain in process. Mississippi Power Company now expects the remainder of the Kemper IGCC, including both gasifiers, will be placed in service by the end of May 2017.

Table 4: Key Contracts Over \$10M

(in millions of dollars)	Issue Initial Inquiry	Award Date	Current View	Variance from Previous Month
<b>Equipment and Material Contracts Over \$10M</b> <i>(Represents 92% of total equipment and material contracts)</i>	Dates in <b>BOLD</b> are actual dates; others are forecast dates		<b>\$1,480.7</b>	<b>(\$0.0)</b>
<b>Steam Turbine Generator</b>	Nov-07	<b>Aug-08</b>		
<b>Gas Turbines</b>	Dec-08	<b>Aug-09</b>		
<b>Heat Recovery Steam Generators</b>	Oct-09	<b>Jun-10</b>		
<b>Syngas Coolers</b>	Jan-10	<b>May-10</b>		
<b>Transport Gasifiers</b>	Jan-10	<b>May-10</b>		
<b>Fluid Bed Dryers</b>	Mar-10	<b>Jul-10</b>		
<b>Air Compressors</b>	Apr-10	<b>Sep-10</b>		
<b>Nitrogen Generation System</b>	Jun-10	<b>Dec-10</b>		
<b>Particulate Control Device (PCD) Systems</b>	Nov-10	<b>Sep-11</b>		
<b>Generator Step-up Transformers</b>	Jul-10	<b>Jan-11</b>		
<b>Station Service Transformers</b>	Jul-10	<b>Dec-10</b>		
<b>Coal Dense Phase Conveyors</b>	Sep-10	<b>Nov-10</b>		
<b>Coal Lock Vessels</b>	Aug-10	<b>Jan-11</b>		
<b>Water Treatment System</b>	Jul-10	<b>Feb-11</b>		
<b>Structural Steel</b>	Sep-10	<b>Dec-10</b>		
<b>Heat Exchangers</b>	Apr-10	Multiple		
<b>Chemical Reactors</b>	Jul-10	Multiple		
<b>Vessels</b>	Jun-10	Multiple		
<b>Heat Exchangers</b>	Jul-10	Multiple		
<b>Compressors</b>	Jun-10	Multiple		
<b>Catalyst</b>	Jul-10	Multiple		
<b>Pumps</b>	Jun-10	Multiple		
<b>Drums</b>	Jan-10	Multiple		
<b>Unit Chillers</b>	Jul-10	Multiple		
<b>Construction Piping</b>	Jun-10	Multiple		
<b>Instrumentation &amp; Controls</b>	Oct-10	Multiple		
<b>Electrical</b>	Apr-11	Multiple		
<b>Transmission Line Structures</b>	May-11	Multiple		
<b>Construction Contracts Over \$10M</b> <i>(Represents 99% of total construction contracts)</i>	Dates in <b>BOLD</b> are actual dates; others are forecast dates		<b>\$1,977.8</b>	<b>\$0.5</b>
<b>Cut and Fill Excavation</b>	Jul-10	<b>Aug-10</b>		
<b>Underground</b>	Nov-10	<b>Jan-11</b>		
<b>Concrete</b>	Nov-10	<b>Jan-11</b>		
<b>Gasifier General Contractor</b>	Apr-11	<b>Jul-11</b>		
<b>Combined Cycle General Contractor</b>	Oct-11	<b>Dec-11</b>		
<b>Water Lateral</b>	Jul-11	<b>Sep-11</b>		
<b>Architectural Buildings</b>	Feb-11	Multiple		
<b>Cooling Tower</b>	Feb-10	<b>Sep-10</b>		
<b>Insulation</b>	Jan-12	<b>Jun-12</b>		
<b>Field Erected Tanks</b>	Nov-10	<b>Feb-11</b>		
<b>Water Storage Pond</b>	Nov-11	<b>Dec-11</b>		
<b>Gas Clean-up &amp; By Products</b>	Oct-11	<b>Dec-11</b>		
<b>Turbine Generator</b>	Nov-11	<b>Dec-11</b>		
<b>HRSO Erection</b>	Aug-11	<b>Sep-11</b>		
<b>Piling</b>	Sep-10	<b>Dec-10</b>		
<b>Ash Storage</b>	Nov-11	<b>Dec-11</b>		
<b>Total</b>			<b>\$3,458.5</b>	<b>\$0.5</b>

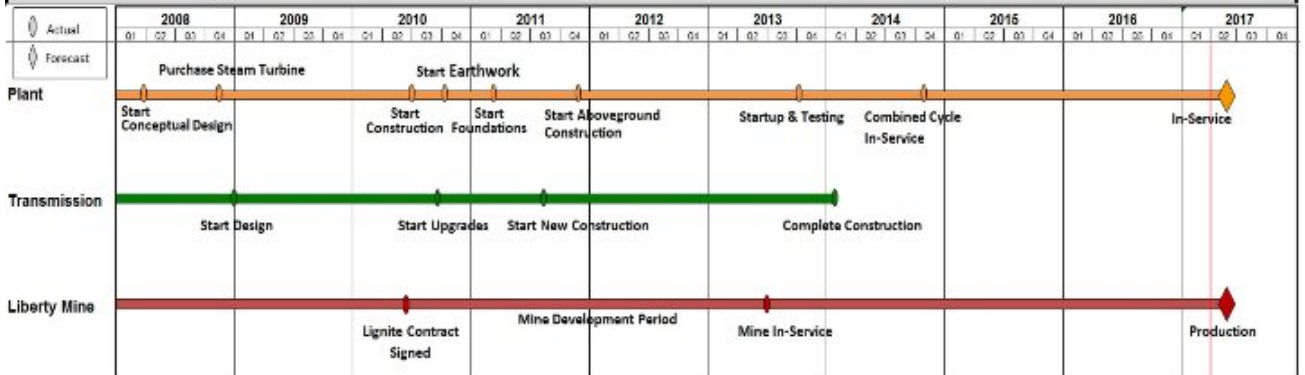
**Safety - as of 04/23/2017**

OSHA Recordable Incident Rate:	Project to Date: .42	Work Hours:	Project to Date: 41,258,682
	Year to Date: 0		Year to Date: 296,958

**Schedule - Key 90-Day Milestones - as of 04/23/2017**

In-Service Date	Forecast	Actual	Comments
	May-17		Previously forecasted in Apr 2017

**Schedule - Overall Project**



**Permits and Approvals** Dates in **Bold** are actual dates, others are forecast dates

Description	Status	Submittal	Approval
State Groundwater Test Well Permit MS-GW-16425	Approved	5/30/07	6/26/07
State NPDES Stormwater Run-off Permit MSR104866	Approved	11/13/07	3/12/10
State PSD Air Permit 1380-00017	Approved	12/20/07	3/12/10
State Groundwater Production Well Permit MS-GW-16562	Approved	5/21/08	7/22/08
MPSC Certificate	Approved	1/16/09	6/3/10
State Permit to Operate Wastewater Disposal System w/no Discharge Permit MSU009005 <sup>(1)</sup>	Approved	11/19/09	3/12/10
State Dam Safety Approval App. No. 09-041	Approved	12/1/09	3/23/10
State Dam Safety Approval App. No. 09-040	Approved	12/1/09	3/23/10
FAA stack permit	Approved	2/8/11	3/14/11
DOE NEPA ROD (CCPI2)	Approved	11/6/09	8/19/10
State 401 Water Quality Certification	Approved	10/27/09	9/14/10
USACE 404 Permit for Wetlands SAM-2009-01149-DMY	Approved	10/27/09	11/18/10
State Solid Waste Management Permit	Approved	6/11/10	11/15/11
State Dam Safety - Make-up Reservoir	Approved	6/3/11	8/12/11
State Dam Safety - Retention Pond B	Approved	6/1/11	8/9/11
Dam Safety LDF Retention Pond Permit	Approved	10/6/11	11/2/11
NPDES Emergency Discharge Permit	Approved	12/1/11	8/12/14
NPDES Baseline Industrial Storm Water General Permit	Approved	5/24/13	3/7/14
Title IV Acid Rain Permit	Approved	10/13/11	8/1/16
Title V Operating Permit <sup>(2)</sup>	Pending	8/22/14	
Risk Management Plan (RMP)	Approved	4/22/15	4/22/15

(1) State Permit to Operate Wastewater Disposal System w/no Discharge Permit MSU009005 was revoked on 8/12/14 due to the approval of the NPDES Emergency Discharge Permit on 8/12/14.  
 (2) Title V Operating Permit application was submitted 8/18/14. The plant will operate under the current construction permit until the Title V Operating Permit is issued.

**Economic Impact**

**Table 5: Mississippi Construction, Equipment, Material and Professional Services Companies (Tier 1)**

<b>Company Name</b>	<b>City</b>	<b>Type of Work</b>	<b>Company Name</b>	<b>City</b>	<b>Type of Work</b>
3 D Trucking	Louisville	Professional Service	Broadmoo Home	Meridian	Construction
3point Technologies	Columbus	Professional Service	Brown Printing Company	Meridian	Construction
4 County Electric Power Association	Columbus	Construction	Brown & Mitchell	Gulfport	Construction
A E Allen	Pass Christian	Construction	Brunini	Jackson	Professional Services
A&B Electric	Meridian	Professional Services	Buckwalter Stadium Inc.	Meridian	Construction
AA Calibration Services	Yazoo City	Professional Service	Burford Electric Service, Inc	Columbus	Construction
ABF Freight	Jackson	Material	Burkhalter Rigging Inc	Columbus	Construction
Accu Fab & Construction, Inc	Moss Point	Material	Burk's Aviation	Hattiesburg	Professional Services
Ace Data Storage	Gulfport	Professional Service	Business Interiors	Jackson	Professional Services
ADCO Companies Ltd	Brandon	Equipment	Can't Be Beat Fencing	Perkinston	Construction
Advanced Mold Professionals LLC	Lake	Professional Service	Capital Concrete Cutting Inc	Clinton	Materials
AES Limited PC	Meridian	Construction	Capitol Hardware Company, Inc.	Jackson	Professional Services
Aggreko Cooling Tower Service	Ridgeland	Equipment	Carter Miller Associates	Meridian	Professional Services
Air Center of Mississippi	Jackson	Material	Cawco, Inc	Bailey	Construction
Air Management, LLC	Meridian	Construction	Central Culvert & Pipe	Philadelphia	Material
Air Tool Supply	West Point	Material	Central Mississippi Communications	Kosciusko	Professional Services
Airgas South	Meridian	Construction	Central Office Supply	Kosciusko	Construction
AJA Management	Jackson	Professional Services	Central Pipe Supply Inc	Jackson	Material
Al Covington / Bill Dubre	Meridian	Construction	Chain Electric Co.	Hattiesburg	Construction
All Brand Foods	Hattiesburg	Professional Services	Chancellor Supply	Laurel	Material
All Clean Janitorial	DeKalb	Professional Services	Chet's Paint & Body Shop	Meridian	Professional Services
All Safe Technologies	Gulfport	Professional Services	Chevron Products	Moss Point	Equipment
All Star Printing	Columbus	Materials	Chris Haynes Electric Supply	Jackson	Materials
Almetek Industries Inc	Ridgeland	Material	Cintas Corporation	Jackson & Meridian	Construction
American Controls	Amory	Material	Cintas FAS	Jackson	Professional Services
American Fire & Safety	Laurel	Professional Services	City of Meridian	Meridian	Professional Services
American Forest Management	Meridian	Professional Services	Clives Steel Co.	Rosedale	Material
American Rental	Philadelphia	Construction	Coast Valve & Fittings Company, LLC	Pascagoula	Material
American Supply Co Inc	Jackson	Material	Coastal Drug Detection LLC	Gulfport	Professional Services
Anderson Retail	Hattiesburg	Material	Coastal Painting and General Contractors	Gautier	Professional Services
APAC Mississippi Inc	Jackson	Construction	Collins and Null	Hattiesburg	Professional Services
Appraisal Group	Philadelphia	Professional Services	Collins Filter Co Inc	Gulfport	Material
Appraisers Associated Ltd.	Meridian	Professional Services	Collinsville Hardware	Meridian	Material
Aquaterra Engineering LLC	Madison	Professional Services	Columbus Rubber & Gasket	Columbus	Construction
Argus Analytical	Jackson	Professional Services	Commercial Interiors	Long Beach	Professional Services
Asplundh Tree Expert Co	D'iberville	Construction	Complete Industrial Solutions LLC	Vancleave	Construction
Atwood Fence	Kosciusko	Construction	Comsouth	Meridian	Professional Services
B Clean	Laurel	Professional Services	Consolidated Electrical Distributors Inc	Gulfport	Material
Baker Ready Mix	Louisville	Material	Consolidated Pipe & Supply Co	Pascagoula	Material
Balch & Bingham, LLP	Gulfport	Professional Services	Contract Fabricators, Inc.	Holly Springs	Equipment
Barnhart Crane & Rigging	Jackson	Construction	Cornett Bolt & Screw	Gulfport	Material
Bay Pest Control	Ocean Springs	Professional Services	CSS Document Solutions	Meridian	Professional Services
Bayou Management Inc	Columbus	Professional Services	CTC, Inc	Louisville	Material
Beckham Concrete Cutting, LLC	Perkinston	Construction	Cuevas Auction, LLC	Picayune	Professional Services
Bellavilla Community Club	Bailey	Construction	Custom Creations and More	Meridian	Construction
Bengal Resources and Associates, Inc.	Columbia	Professional Services	D&E Construction Co Inc	Meridian	Construction
Betty Luke	Bailey	Professional Services	DACO LLC	Columbus	Professional Services
Bill Oakley Consulting Hydrologist, Inc.	Brandon	Professional Services	Daily Equipment Co Inc	Jackson	Construction
Bill's Trailer Sales	Ackerman	Materials	David L. Moon	Collinsville	Construction
Black Brothers, Inc.	Ackerman	Construction	Davidson Hauling & Constriction	Marion	Material
Blackwell Shepards Locksmith	Meridian	Professional Services	Davis Trailer	Moselle	Construction
Blaine's Trailer Rental & Sale	Richland	Construction	Deep South Services LLC	Hickory	Material
BMI Environmental Services	Gulfport	Professional Services	Design Precast and Pipe	Gulfport	Construction
Bonds of Love Ministries	DeKalb	Construction	Dibs Chemical & Supply	Gulfport	Construction
Briggs Equipment	Jackson	Construction	Dickerson Petroleum	Kosciusko	Construction

*continued on page 5*

**Mississippi Power  
Kemper County IGCC  
Project**

**Total Project  
Mississippi Economic Impact**

**MPSC Docket No. 2009-UA-0014  
Monthly Status Report  
Through March 2017**

**Economic Impact (continued from page 4)**

**Table 5: (continued) Mississippi Construction, Equipment, Material and Professional Services Companies (Tier 1)**

Company Name	City	Type of Work	Company Name	City	Type of Work
Ditch Witch of Mississippi	Pearl	Construction	Gulf South Survey & Environmental	Biloxi	Professional Services
Dixie Mat & Hardwood Co Inc	Sandy Hook	Material	H & H Chief Sales	Carthage	Construction
Document Storage Solutions	Jackson	Construction	H & H Construction	Greenwood	Construction
Doug Jones & Son Construction Co	Meridian	Construction	H & P Leasing, Inc.	Flowood	Construction
Douglas Inc.	Jackson	Professional Service	Hampton & Associates Law Office	DeKalb	Professional Services
Dowdle Gas Company	DeKalb	Construction	Hanson	Gulfport	Construction
Dr. David Lang, PhD	Starkville	Professional Services	Hargrove Engineers Constructors	Pascagoula	Professional Services
Dutch Lubricants	Pearl	Material	Havard Pest Control	Hattiesburg	Professional Services
DZ Atlantic	Moss Point	Equipment	HD Supply Waterworks LTD	Pearl	Material
E. Patrick Cassidy & Associates Inc.	Gulfport	Professional Services	Heartland Pump Rental & Sales Inc	Horn Lake	Construction
Earl Dudley Associated	Jackson	Construction	Heblon Heating & Air Conditioning	Meridian	Construction
East Mississippi Electric Power Assoc.	Meridian	Construction	Hemphill Construction	Florence	Construction
ECO Systems (now Allen Eng. & Science)	Jackson	Professional Services	Henderson Steel Corp	Marion	Construction
Eddie Briggs, Attorney at Law	Madison	Professional Services	Herring Gas Co Inc.	Philadelphia	Construction
Educational Furniture & Equipment Co.	Meridian	Construction	Hi Grade Gin Corporation	Winona	Construction
Eley Guild Hardy Architects	Biloxi	Professional Services	Hilton Spears Custom Cabinets	Philadelphia	Construction
Emergency Equipment Professionals	Southaven	Professional Services	HJM Forest Resource Management	DeKalb	Professional Services
Endom Welding & Trailer Repair	Ellisville	Construction	Holiday Construction	Poplarville	Construction
Engineering Plus	Meridian	Professional Services	Holloway Termite & Pest Services	Meridian	Professional Services
Engineering Services	Jackson	Professional Services	Hooper Electronics	Pascagoula	Material
Eutaw Construction	Aberdeen	Construction	Hotel & Restaurant Supply	Meridian	Material
F L Clayton Trust	Meridian	Construction	Howard Industries	Laurel	Equipment
Falson Office Products Co LLC	Gulfport	Construction	HRD Safety	Jackson	Material
Fastenal	Philadelphia	Material	Hughes Brothers Inc	Jackson	Material
FC&E Engineering LLC	Brandon	Professional Services	Ice Plant	Meridian	Construction
Ferguson Enterprises	Jackson	Equipment	Industrial Commercial Fire Protection	Lucedale	Construction
Firestone	Meridian	Professional Services	Industrial Electric Motor Works Inc	Meridian	Professional Services
Fish and Fisher	Jackson	Construction	Industrial Machine & Manufacturing	Meridian	Professional Services
Fluid Process & Pumps	Florence	Material	Industrial Steel Corp.	Jackson	Construction
Forest Services, Inc.	Pelahatchie	Professional Services	Infolab, LLC	Clarksdale	Professional Services
Forestry Suppliers	Brandon	Construction	Ivy Consulting	Quitman	Professional Services
Fraleay Dozer Service	Collins	Construction	J5 GBL LLC	Columbus	Professional Services
Fulton Line Service	Preston	Construction	J & J Contractors	Collinsville	Professional Services
G & K Services	Jackson	Professional Services	J W Lee Company, Inc	Gulfport	Equipment
G & O Supply Co. Inc.	Houston	Material	Jabez Group, LLC	Madison	Professional Services
Gary G. Williams, Appraisals	Flowood	Professional Services	Jackson Bolt & Screw	Jackson	Material
Genesis Telecommunications	Collinsville	Professional Services	James Self Inc dba JSI Communication	Pearl	Material
GEO Products	Madison	Material	JH Haynes Electric Co Inc	Gulfport	Professional Services
George's Auto Parts	Meridian	Construction	Joe McGee Construction	Lake	Construction
Geotechnical Engineering Assoc.	Ridgeland	Professional Services	John B. Stewart Real Estate Appraiser	Canton	Professional Services
Gipson Steel Inc	Meridian	Construction	John C Stennis Memorial Hospital	DeKalb	Professional Services
Glass Inc.	Meridian	Material	John Fayard Moving & Warehousing, LLC	Gulfport	Materials
Glassworx	Philadelphia	Material	John's Welding	Meridian	Professional Services
Glenn Hollingsworth Enterprise LLC	Hickory	Construction	Johnson Surveying	Collinsville	Professional Services
Glenn Machine Works	Columbus	Construction	K & S Industrial Repair, Inc	Brookhaven	Materials
Glover Young Walton & Simmons, PLLC	Meridian	Professional Services	K. C. Garbage & Solid Waste	DeKalb	Construction
Godwin Group	Jackson	Professional Services	Kelly Services	Gulfport	Professional Services
Goforth Forest Management, Inc.	Meridian	Professional Services	Kemper Construction Supply	DeKalb	Material
GraRock Trucking	Macon	Construction	Kemper County Landfill	DeKalb	Professional Services
Great South Management	Marion	Professional Services	Kemper County Messenger	DeKalb	Professional Services
Greenway Construction	Wiggins	Construction	Kemper Electric Supply	DeKalb	Material
Guice Marketing & Consulting	Biloxi	Professional Services	Kennedy Construction	Meridian	Construction
Gulf Coast Fence	Pascagoula	Construction	Knesal Engineering Services, Inc.	Gulfport	Professional Services
Gulf Office Systems Inc	Saucier	Professional Services	Knowles Material Co	Jackson	Material
Gulf Sales & Supply	Pascagoula	Construction	L & M Carpet Cleaning	Meridian	Professional Services

continued on page 6

Economic Impact (continued from page 5)

Table 5: (continued) Mississippi Construction, Equipment, Material and Professional Services Companies (Tier 1)

Company Name	City	Type of Work	Company Name	City	Type of Work
Lauderdale County Farm Supply	Meridian	Materials	Newell Paper Company	Meridian	Material
Laurel Ford	Laurel	Equipment	NGK Locke Inc	Ridgeland	Material
Laurel Machine & Foundry Co	Laurel	Materials	NL Carson	Carthage	Construction
Lawyers PLLC	Meridian	Professional Services	North Mississippi Medical Center	Eupora	Professional Services
Layne Christenson	Jackson	Construction	Northwest Kemper Water Association	Preston	Construction
Long Wholesale, Inc	Meridian	Material	Office Furniture Jackson CIN	Ridgeland	Construction
LPK Architects	Meridian	Professional Services	Office Innovations	Ridgeland	Construction
Luke Printing Company	Meridian	Professional Services	ORR Safety Corp	Jackson	Material
Lyle Machinery Company	Jackson	Equipment	Pac Services	Biloxi	Professional Services
M G Dyess Inc	Bassfield	Construction	Patrick Allen Garage Door Co.	Meridian	Construction
M&M Holdings	Kilmichael	Material	Pearson Services	Louisville	Construction
Magnolia Steel Co, Inc.	Meridian	Professional Services	Perfect Touch Contractors LLC	DeKalb	Construction
Mailroom Consultants	Jackson	Professional Services	Perma R Products	Grenada	Material
Malouf	Greenwood	Construction	Peterbilt Truck Center	Jackson	Construction
Mar-Com Comm, Inc.	Decatur	Construction	Pettigrew Forestry Consultants	Kiln	Professional Services
Marion Water Department	Marion	Construction	Pickering & Associates	Jackson	Professional Services
Mars Manufactured Homes	Meridian	Construction	Plan House Printing and Graphics	Tupelo	Professional Services
Martin Supply (MISCO)	Saltito	Material	Powell Transportation	Columbia	Material
Martin Truck & Tractor	Columbus	Construction	Preformed Line Products Co	Ridgeland	Material
Marvin's	Meridian	Material	Print Plus	Meridian	Professional Services
Mary Joyce Angero	Meridian	Construction	Pritchard Engineering	Starkville	Professional Services
Max Floor Specialist	Brandon	Professional Services	Pro Turf, Inc.	Winona	Construction
McCrary Construction Services	Columbus	Construction	ProCall Services	Biloxi	Professional Services
McElroy Plumbing & Heating	Meridian	Construction	Progressive Pipeline	Meridian	Construction
Medical Foundation (Rush Hospital)	Meridian	Professional Services	ProModular	Jackson	Construction
MEI Electrical Inc	Philadelphia	Construction	Provine Helicopter Service, Inc.	Greenwood	Professional Services
Melvin Chaney Jr Real Estate Appraiser	Madison	Professional Services	Puckett Machinery Co	Jackson	Construction
Mercury Aviation Inc	Flowood	Professional Services	Puckett Rents Inc	Jackson	Construction
Meridian Community College	Meridian	Professional Services	Quality Welding & Fabrication	Columbia	Equipment
Meridian Personnel Service	Meridian	Professional Services	Ralph L. Morgan	Meridian	Material
Meridian Tire & Brake	Meridian	Professional Services	Redd Pest Control of Gulfport	Gulfport	Professional Services
Metal Tech	Gulfport	Professional Services	Richard R. Hite Appraisal, LLC	Canton	Professional Services
Micro Methods Laboratory Inc	Ocean Springs	Professional Services	Robert's Sewing Machine Parts	Meridian	Professional Services
Mid South Welding	Meridian	Construction	Robinson Electric Supply Co Inc	Meridian	Material
Mikropul	Iuka	Equipment	Roto-Rooter Sewer & Drain	Meridian	Professional Services
Miller Enterprises	Hattiesburg	Construction	RMKPC, Inc dba Orkin	Meridian	Professional Services
MillerCo Inc.	Gulfport	Construction	Robine & Welch Machine & Tool Co.	Laurel	Construction
Milton's A/C Service	DeKalb	Construction	Rush Care	Meridian	Professional Services
Mississippi Beverage Water, LLC	Meridian	Construction	Ryan Motors Inc	Hattiesburg	Construction
Mississippi Department of Transportation	Jackson	Construction	S&S Welding	Ellisville	Professional Services
Mississippi Gauge & Supply, Inc.	Meridian	Material	Sam Oswalt & Son, Inc.	Starkville	Construction
Mississippi Police Supply Company	Ruleville	Material	Sanders Air & Heat	Meridian	Professional Services
Mississippi State University	Starkville	Professional Services	Sanders Gas	Meridian	Construction
Missouth Vital Records	Meridian	Professional Services	Sequel Electrical Supply	Meridian	Material
Mitchell Sign, Inc.	Meridian	Professional Services	Service Master	Marion	Professional Services
MMC Material	Meridian	Construction	Sherwin Williams	Meridian	Material
Modern Landscape Design	Meridian	Professional Services	Sign's Plus of Meridian	Meridian	Construction
Modular Space Corp	Jackson	Construction	Simmons Wrecker Service, Inc.	Meridian	Professional Services
Motion Industries	Meridian	Material	Singley Construction Co	Columbia	Construction
Mowdy Cabinetry	Meridian	Professional Services	Sirman & Associates	Pelahatchie	Professional Services
MSC Industrial	Meridian	Material	Slay Steel Inc	Meridian	Material
National Scrubwear Inc	Meridian	Material	South Mississippi Hydroseeding	Wiggins	Construction
Necaise Locksmith Service	Gulfport	Material	Southern Business Supply	Meridian	Construction
Neel Schaffer	Jackson	Professional Services	Southern Chevrolet	DeKalb	Construction
Nehring	Ridgeland	Material	Southern Colonel Homes Inc	Hattiesburg	Construction

continued on page 7

**Economic Impact (continued from page 6)**

**Table 5: (continued) Mississippi Construction, Equipment, Material and Professional Services Companies (Tier 1)**

Company Name	City	Type of Work	Company Name	City	Type of Work
Southern Hose & Industrial	Jackson	Material	Town of DeKalb	DeKalb	Construction
Southern Natural Resources, Inc.	Stewart	Professional Services	Town of Marion	Marion	Construction
Southern Pine Electric	Taylorville	Equipment	Traffic Control Products Company	Brandon	Construction
Southern Pipe & Supply Co Inc	Gulfport	Material	Tri-State Consulting Services	Philadelphia	Professional Services
Southern Surveyors Group LLC	Gulfport	Professional Services	Truckers Supply	Meridian	Construction
Southern Tire Mart	Meridian	Construction	TST&E, LLC	Carriere	Construction
Southern Waste Disposal	Meridian	Construction	Tull Brothers	Meridian	Construction
SPCS Inc	Gulfport	Professional Services	U Save Car & Truck Rental	Meridian	Construction
Specialty Fencing	Meridian	Construction	Underwood Sales Inc	Ovett	Construction
Specialty Fuel	Kosciusko	Construction	United Fence	Meridian	Construction
Specialty Hose & Fabrication	Gulfport	Material	United Rentals N.A. (formally RSC Eqmt)	Meridian	Construction
Specialty Machine	Gulfport	Equipment	Vice Brothers Unlimited	Moss Point	Material
Starkville Computers	Starkville	Construction	Vice Construction Co.	Moss Point	Construction
Starvision Satellite Technology Inc	Gulfport	Professional Services	Vick's Paint & Body Shop	DeKalb	Professional Services
Stevie Holiday	DeKalb	Professional Services	Volvo Rents	Hattiesburg	Construction
Stewart Environmental Construction	Tupelo	Construction	Vulcan	Laurel	Material
Stribling Equipment	Jackson	Construction	W G Yates & Sons Construction	Biloxi	Construction
Strickland Companies	Columbus	Construction	W.L. Cook	Bailey	Professional Services
Structural Steel Services	Meridian	Material	Walker Audio	Biloxi	Professional Services
Stuart C. Irby Co.	Meridian/Jackson	Material	Walley Forestry	Ellisville	Professional Services
Sturgis Mat	Ackerman	Material	Waring Oil Company LLC	Vicksburg	Material
Sudden Service	Louisville	Construction	Waste Management	Tupelo & Meridian	Professional Services
Sunbelt Equipment Marketing	Meridian	Construction	Waste Pro of MS	Meridian	Professional Services
Sunbelt Insulation	Lucedale	Material	Waters International	Meridian	Material
Sutton Lumber	Meridian	Material	Waters Truck & Tractor	Kosciusko	Construction
Suzy Q Monogramming Screenprinting	Philadelphia	Construction	Waterstone Business Strategies	Brandon	Professional Services
Swetman Security Service, Inc	Biloxi	Professional Service	Watson Quality Ford	Jackson	Construction
System Scale	Jackson	Equipment	Watt Equipment	DeKalb	Construction
TK Stanley	Waynesboro	Material	Waypoint Analytical Mississippi Inc	Ridgeland	Professional Services
Taylor Machine Works	Louisville	Construction	Wilkerson Construction	DeKalb	Construction
TD Consulting	Gautier	Professional Service	William Clay	DeKalb	Construction
Tencarva Machinery	Jackson	Construction	Woodall Electric Inc	Meridian	Professional Services
Terracon Consultants	Madison	Professional Services	Woodstock Furniture	Meridian	Construction
The 1869 Group LLC	Jackson	Construction	Working Solutions	Meridian	Professional Services
The Bolt Co dba Henderson Bolt	Meridian	Material	Yard Services	Meridian	Professional Services
The McGinnis Lumber Company	Meridian	Material			
The Service Company of Mississippi	Meridian	Professional Services			
The Sign Doctor	Meridian	Material			
Thomas Refrigeration	Meridian	Professional Services			
Threaded Fasteners	Gulfport	Material			
Thomasson Company	Philadelphia	Construction			
Tice Engineering	Wiggins	Professional Services			
Tim Parker Construction	Soso	Construction			
Timber Craft, Inc.	DeKalb	Professional Services			
TLH Construction	Pass Christian	Professional Services			
Tolbert Chevrolet	Philadelphia	Construction			
Toolpushers Supply Co	Laurel	Material			
Tooney's Tire Center	DeKalb	Professional Services			

Total Mississippi Contracts - Tier 1 and Tier 2 (in millions of dollars) **\$2,175**  
 Total Mississippi Spend through March 2017 - Tier 1 and Tier 2 (in millions of dollars) **\$2,159**

Mississippi Workforce	Plant	Mine	Total
Construction Jobs	239	0	239
Plant/Mine Jobs	276	134	410

**Mine Status**

The surface coal mining and water pollution control permits for the Liberty Mine were approved by the MDEQ Permit Board on December 13, 2011. Liberty Mine began commercial operations on June 5, 2013. The dragline was placed in service on November 15, 2013. Construction activities are complete for the mine.

**Table 6: Mine Costs (in millions of dollars)**

Cost Category	Current View	Actuals through March 2017
Development	\$80.1	\$80.1
Land and Mineral Leases	29.2	29.2
Equipment	106.3	106.3
Mine AFUDC	16.5	16.5
<b>TOTAL <sup>(1)</sup></b>	<b>\$232.0</b>	<b>\$232.0</b>

(1) The Liberty Mine was placed in service in June 2013. Construction costs incurred since that date are reported above as Mine costs. Operational costs incurred since the mine was placed in service are not included in this report. These costs are considered to be post-COD capital and fuel inventory costs and will be subject to MPUS and MPSC oversight in conjunction with the annual review of fuel costs.

**Mine Safety**

Recordable Incident Rate: 1.08 Project to Date Work Hours: 925,492

**Mine Permits and Approvals**

Dates in **Bold** are actual dates, others are forecast dates

Description	Status	Submittal	Approval
401 Water Quality Certification	Approved	8/9/10	9/14/10
404 USCAE Permit	Approved	8/9/10	12/10/10
MSHA Sedimentation Pond (Revision to include pond)	Approved	8/29/13	6/23/14
MSHA Mine Identification Number	Approved	12/7/10	12/8/10
State mine permit (SMCRA)	Approved	1/18/11	12/14/11
NPDES permit	Approved	3/1/11	12/14/11
State Dam Construction Permit	Approved	3/18/11	6/29/11
State Stormwater Permit	Approved	11/23/11	1/27/12
SPCC Plan	Approved	3/30/12	3/30/12
State Wastewater Discharge (Sewage)	<i>Not required: zero discharge system planned</i>		
Dragline FAA permit	Approved	7/9/12	8/13/12